

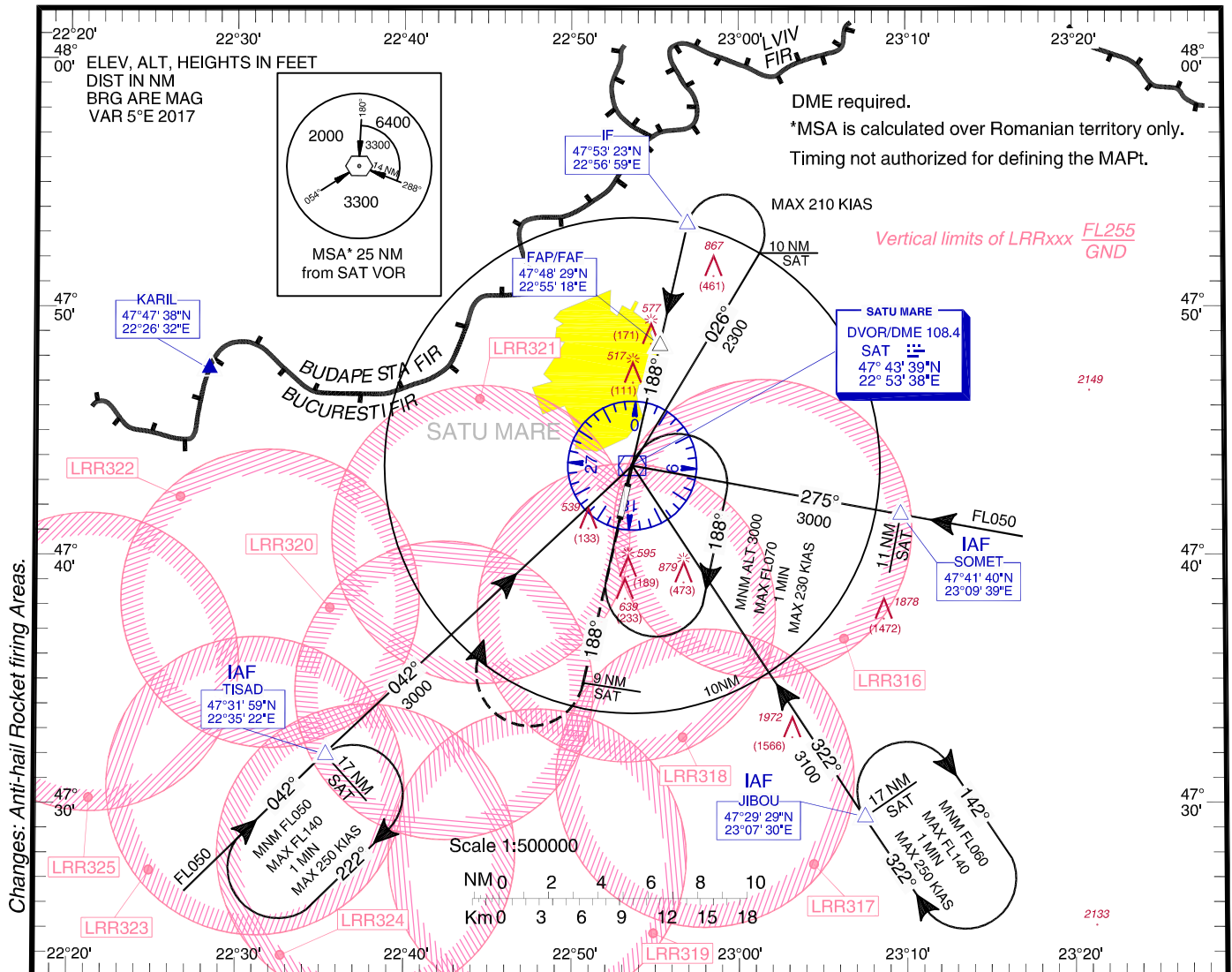
**INSTRUMENT APPROACH  
CHART - ICAO**

**AERODROME ELEV. 413 FT**  
HEIGHTS RELATED TO THR19 - ELEV. 406FT

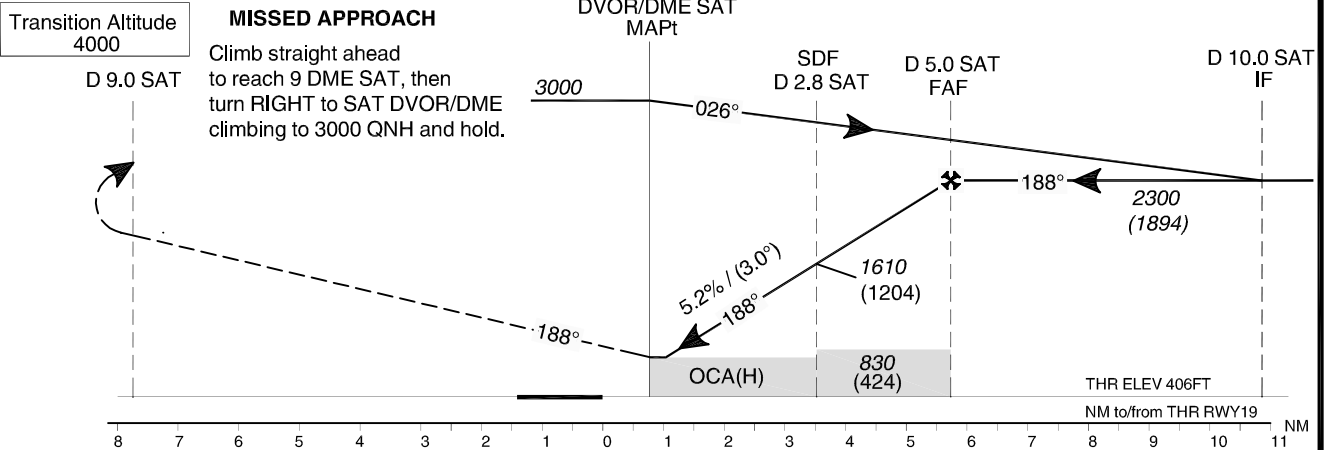
**SATU MARE / Satu Mare (LRSM)**

Satu Mare Tower 119.655  
Satu Mare Tower ALTN 118.800

**VOR  
RWY 19  
CAT C, D**



Changes: Anti-hail Rocket firing Areas.



OCA/H	C	D
Straight-in Approach		
Stepdown fix (D 2.8 SAT)	770 (364)	
w/o stepdown fix	830 (424)	
Circling	1280	

GS	kts	70	90	100	120	140	160
FAF-MAPt 4.97 NM	min:s	4:16	3:19	2:59	2:29	2:08	1:52
Rate of descent	ft/min	372	478	531	637	743	849

Dist to SAT DME	NM	1	2	2.8	3
Altitude (Height)	ft	1031 (625)	1349 (943)	1604 (1198)	1667 (1261)

For data tabulation see verso

**SATU MARE / Satu Mare (LRSM)**  
**VOR RWY 19, CAT C, D**

**AERONAUTICAL DATA TABULATION**

<b>VOR Approach to RWY 19, CAT C, D from TISAD, JIBOU, SOMET</b>	
<b>Fix/Point</b>	<b>Coordinates</b>
<b>TISAD</b> (IAF) – R 221.75° / 17.00 NM SAT	47°31'58.7"N 022°35'21.6"E
<b>JIBOU</b> (IAF) – R 141.41° / 17.00 NM SAT	47°29'28.6"N 023°07'30.0"E
<b>SOMET</b> (IAF) – R 095.27° / 11.00 NM SAT	47°41'40.0"N 023°09'39.3"E
<b>SAT VOR/DME</b> (MAPT)	47°43'38.7"N 022°53'37.9"E
<b>10.0D SAT</b> (IF) - R 008.06° / 10.00 NM SAT	47°53'22.8"N 022°56'59.5"E
<b>5.0D SAT</b> (FAF) – 5.00 NM SAT	47°48'29.2"N 022°55'17.9"E
<b>2.8D SAT</b> (Stepdown Fix)	47°46'22.3"N 022°54'34.2"E
<b>THR RWY 19</b>	47°42'51.72"N 022°53'21.73"E

Final approach descent angle: 3.00°