

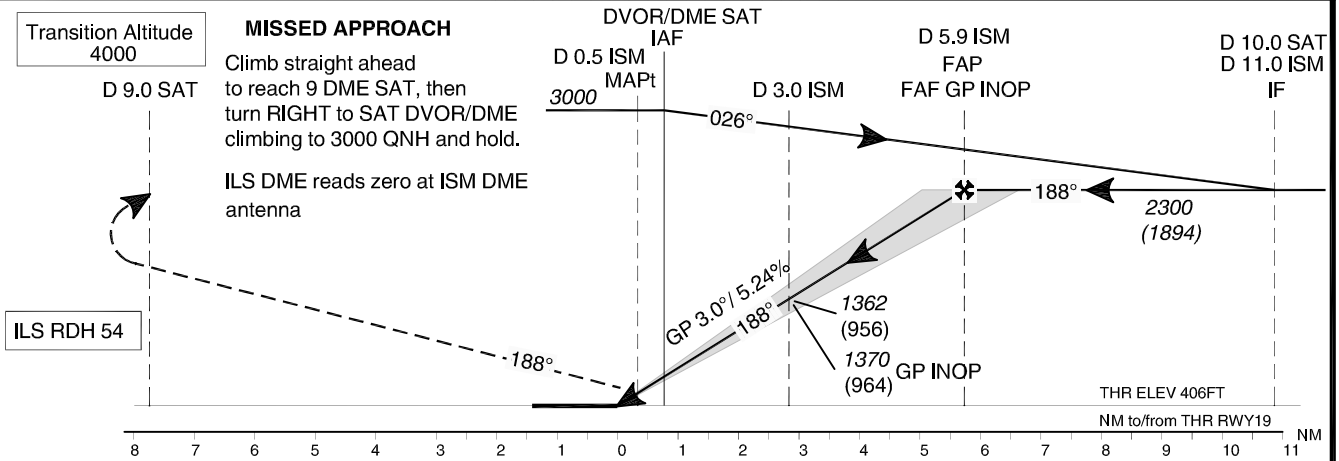
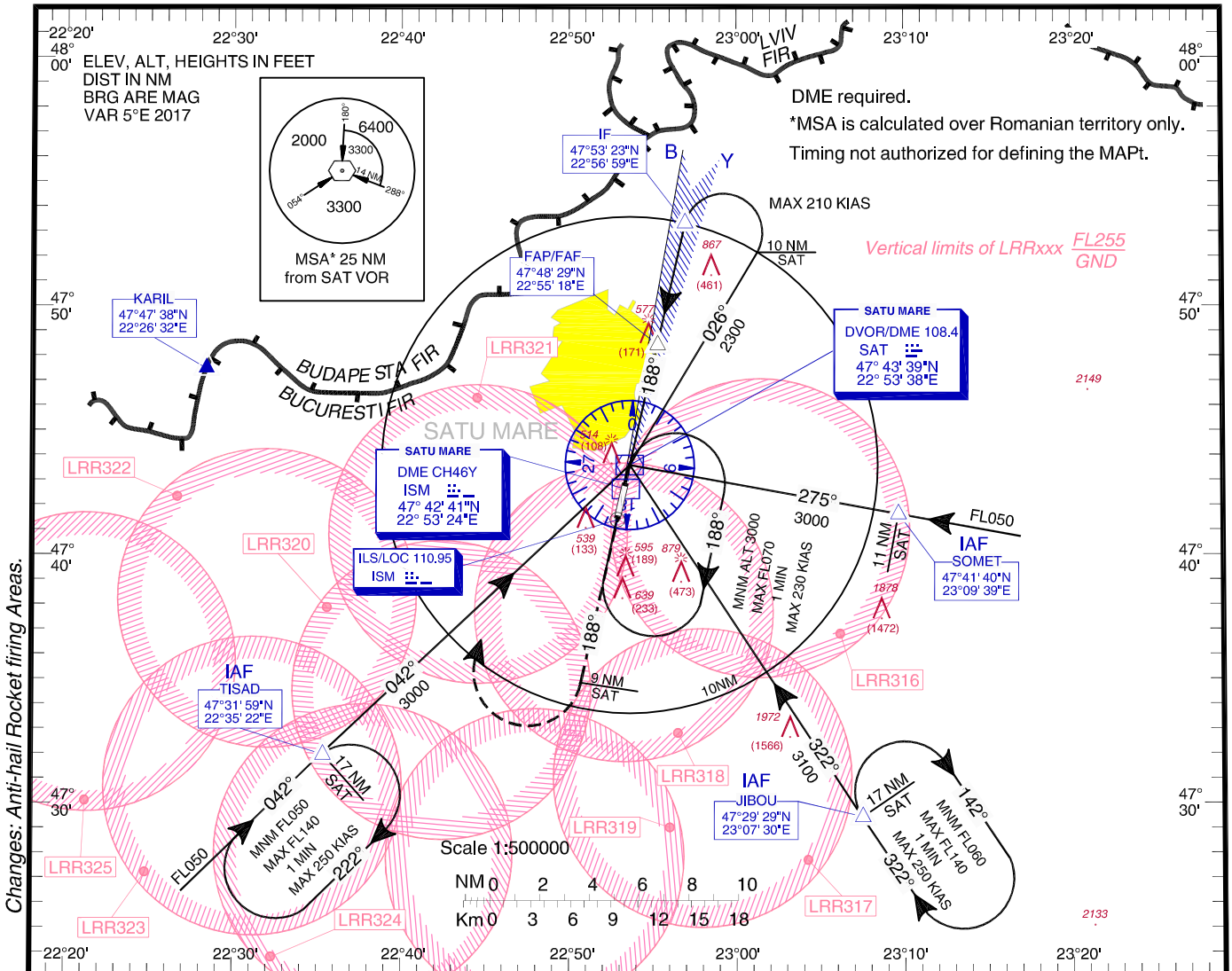
**INSTRUMENT APPROACH
CHART - ICAO**

AERODROME ELEV. 413 FT
HEIGHTS RELATED TO THR19 - ELEV. 406FT

SATU MARE / Satu Mare (LRSM)

Satu Mare Tower 119.655
Satu Mare Tower ALTN 118.800

**ILS
RWY 19
CAT C, D**



OCA/H		C	D
Straight-in Approach	Cat I	606 (200)	615 (209)
	Cat II	527 (121)	540 (134)
	GP INOP	830 (424)	
	GP INOP Stepdown Fix (D 3.0 ISM)	770 (364)	
Circling		1280	

GS	kts	120	140	160
FAF-MAPt 5.45 NM	min:s	2:44	2:20	2:03
Rate of descent	ft/min	637	743	849

Dist to ISM DME	NM	1	2	3	4
Altitude (Height)	ft	726 (320)	1044 (638)	1363 (957)	1681 (1275)

For data tabulation see verso

SATU MARE / Satu Mare (LRSM)
ILS RWY 19, CAT C, D

AERONAUTICAL DATA TABULATION

ILS Approach to RWY 19, CAT C, D from TISAD, JIBOU, SOMET	
Fix/Point	Coordinates
TISAD (IAF) – R 221.75° / 17.00 NM SAT	47°31'58.7"N 022°35'21.6"E
JIBOU (IAF) – R 141.41° / 17.00 NM SAT	47°29'28.6"N 023°07'30.0"E
SOMET (IAF) – R 095.27° / 11.00 NM SAT	47°41'40.0"N 023°09'39.3"E
SAT VOR/DME	47°43'38.7"N 022°53'37.9"E
IF - R 008.06° / 10.00 NM SAT	47°53'22.8"N 022°56'59.5"E
5.9D ISM (FAP/FAF) – 5.93 NM ISM	47°48'29.2"N 022°55'17.9"E
3.0D ISM (SDF)	47°45'37.1"N 022°54'18.6"E
0.5D ISM (MAPT)	47°43'10.9"N 022°53'28.3"E
THR RWY 19	47°42'51.72"N 022°53'21.73"E
LOC	47°41'23.7"N 022°52'51.5"E