

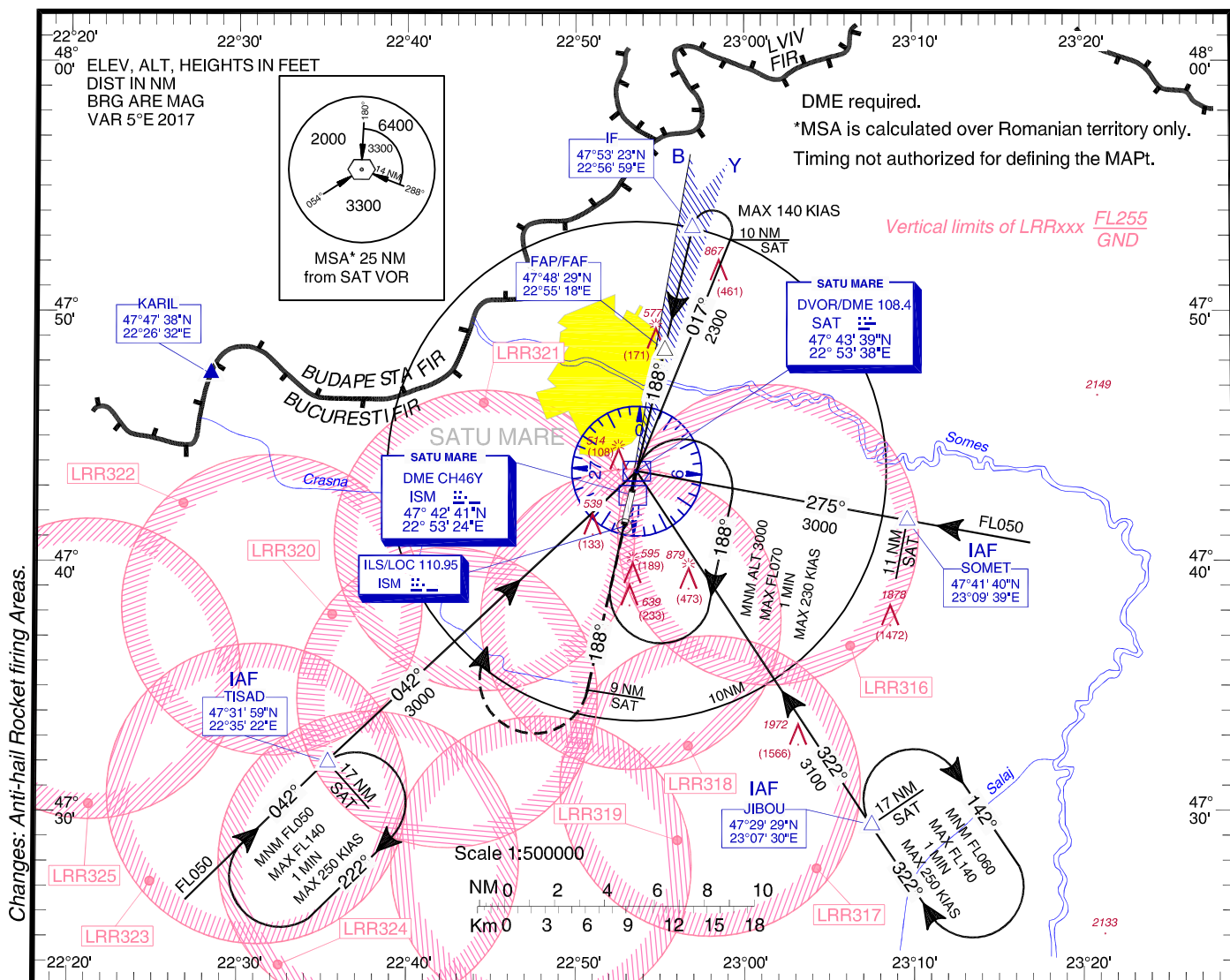
SATU MARE / Satu Mare (LRSM)

INSTRUMENT APPROACH
CHART - ICAO

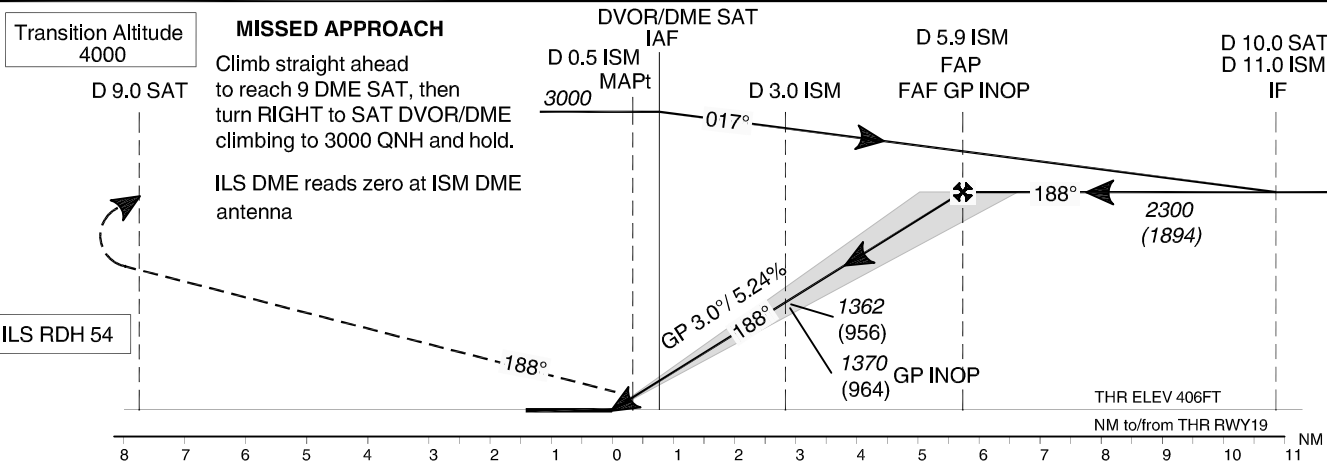
AERODROME ELEV. 413 FT
HEIGHTS RELATED TO THR19 - ELEV. 406FT

Satu Mare Tower 119.655
Satu Mare Tower ALTN 118.800

ILS
RWY 19
CAT A, B



Changes: Anti-hail Rocket firing Areas.



OCA/H		A	B
Straight-in Approach	Cat I	586 (180)	596 (190)
	Cat II	497 (91)	514 (108)
	GP INOP	830 (424)	
	GP INOP Stepdown Fix (D 3.0 ISM)	770 (364)	
Circling		930	

GS	kts	70	90	100	120
FAF-MAPt 5.45 NM	min:s	4:40	3:38	3:16	2:44
Rate of descent	ft/min	372	478	531	637

Dist to ISM DME	NM	1	2	3	4
Altitude (Height)	FT	726 (320)	1044 (638)	1363 (957)	1681 (1275)

For data tabulation see verso



SATU MARE / Satu Mare (LRSM)
ILS RWY 19, CAT A, B

AERONAUTICAL DATA TABULATION

ILS Approach to RWY 19, CAT A,B from TISAD, JIBOU, SOMET	
Fix/Point	Coordinates
TISAD (IAF) – R 221.75° / 17.00 NM SAT	47°31'58.7"N 022°35'21.6"E
JIBOU (IAF) – R 141.41° / 17.00 NM SAT	47°29'28.6"N 023°07'30.0"E
SOMET (IAF) – R 095.27° / 11.00 NM SAT	47°41'40.0"N 023°09'39.3"E
SAT VOR/DME	47°43'38.7"N 022°53'37.9"E
IF - R 008.06° / 10.00 NM SAT	47°53'22.8"N 022°56'59.5"E
5.9D ISM (FAP/FAF) – 5.93 NM ISM	47°48'29.2"N 022°55'17.9"E
3.0D ISM (SDF)	47°45'37.1"N 022°54'18.6"E
0.5D ISM (MAPT)	47°43'10.9"N 022°53'28.3"E
THR RWY 19	47°42'51.72"N 022°53'21.73"E
LOC	47°41'23.7"N 022°52'51.5"E