

**AIRAC  
AIP SUP**

**01  
17 JUN 2021**

**AIRAC AIP SUPPLEMENT 01/21**  
**Work in progress for taxiway construction at**  
**CLUJ NAPOCA / Avram Iancu Airport**  
**Stage I**

The construction works related to stage I of new taxiways have started. At this stage, in order to ensure the proper safety conditions for aviation activity at the airport, it was decided to temporarily close TWY D segment located between TWY A and TWY G. The area is delimited, marked and lighted accordingly. Also, standard taxi routes have been modified. The new standard taxi routes are presented as follows:

**Standard ARRIVAL Taxi Routes**

Landing on RWY 07							
Instruction given by ATC							
Taxi via standard taxi route	Name of the Standard Taxi Route	To	APRON 1	1....9	Taxiway to be followed	Remarks	
	Arrival 1A				RWY Backtrack TWY F TWY D TWY A		To be used by A/C with MTOW < 62T. Exceptions applied by TWR in order to ensure fluency of the airport air traffic.
	Arrival 1B				TWY G		NIL
	Arrival 1C				TWY G TWY C		
	Arrival 1D				TWY G TWY E		
Landing on RWY 25							
Instruction given by ATC							
Taxi via standard taxi route	Name of the Standard Taxi Route	To	APRON 1	1....9	Taxiway to be followed	Remarks	
	Arrival 2A				TWY F TWY D TWY A		To be used by A/C with MTOW < 62 T. Exceptions applied by TWR in order to ensure fluency of the airport air traffic.
	Arrival 2B				RWY Backtrack TWY G		NIL
	Arrival 2C				RWY Backtrack TWY G TWY C		
	Arrival 2D				RWY Backtrack TWY G TWY E		

**Lucrări de construcție căi de rulare la  
Aeroportul CLUJ NAPOCA / Avram Iancu  
Etapa I**

S-au demarat lucrările de construcție aferente etapei I a noii căi de rulare. În această etapă, pentru a fi asigurate condițiile de desfășurare în siguranță a activității de aviație pe aeroport, s-a decis închiderea temporară a segmentului TWY D cuprins între TWY A și TWY G. Zona este delimitată, marcată și balizată corespunzător. De asemenea, au fost modificate și rutele standard de rulare aferente segmentului căii de rulare închise temporar. Noile rute standard de rulare sunt prezentate după cum urmează:

**Rutele Standard la SOSIRE**

Landing on RWY 07							
Instruction given by ATC							
	Name of the Standard Taxi Route				Taxiway to be followed	Remarks	
			Taxi via standard taxi route	Arrival 1A	To		APRON 1
	Arrival 1B	APRON 2		10, 11		TWY G	NIL
	Arrival 1C			13, 15, 17, 14, 16, 18		TWY G TWY C	
	Arrival 1D			12		TWY G TWY E	In emergency situation is assigned as isolated aircraft position
Landing on RWY 25							
Instruction given by ATC							
	Name of the Standard Taxi Route				Taxiway to be followed	Remarks	
			Taxi via standard taxi route	Arrival 2A	To		APRON 1
	Arrival 2B	APRON 2		10, 11		RWY Backtrack TWY G	NIL
	Arrival 2C			13, 15, 17, 14, 16, 18		RWY Backtrack TWY G TWY C	
	Arrival 2D			12		RWY Backtrack TWY G TWY E	In emergency situation is assigned as isolated aircraft position

## Standard DEPARTURE Taxi Routes

Take-off RWY 07					
	Instruction given by ATC			Stop bar	Remarks
	Location	Name of the Standard Taxi Route	Taxiway to be followed		
Taxi via standard taxi route	APRON 1	Departure 1A	TWY A TWY D TWY F	TWY D	To be used by A/C with MTOW < 62T. Exceptions applied by TWR in order to ensure fluency of the airport air traffic.
	APRON 2	Departure 1B (Stands 10, 11)	TWY G RWY backtrack	TWY G	NIL
		Departure 1C (Stands 13, 14, 15, 16, 17, 18)	TWY C TWY G RWY backtrack		
		Departure 1D	TWY E TWY G RWY backtrack		
Take-off RWY 25					
	Instruction given by ATC			Stop bar	Remarks
	Location	Name of the Standard Taxi Route	Taxiway to be followed		
Taxi via standard taxi route	APRON 1	Departure 2A	TWY A TWY D TWY F RWY backtrack	TWY D	To be used by A/C with MTOW < 62 T. Exceptions applied by TWR in order to ensure fluency of the airport air traffic.
	APRON 2	Departure 2B (Stands 10, 11)	TWY G	TWY G	NIL
		Departure 2C (Stands 13, 14, 15, 16, 17, 18)	TWY C TWY G		
		Departure 2D	TWY E TWY G		

- the following charts are temporary suspended: AD 2.7-20/08 OCT 2020, AD 2.7-21/08 OCT 2020.
- the following charts are temporary in force: AD 2.7-20/17 JUN 2021, AD 2.7-21/17 JUN 2021.

Estimated work period is about 5 months.

- END -

**Rutele Standard de Rulare la PLECARE**

Take-off RWY 07					
	Instruction given by ATC			Stop bar	Remarks
	Location	Name of the Standard Taxi Route	Taxiway to be followed		
Taxi via standard taxi route	APRON 1	Departure 1A	TWY A TWY D TWY F	TWY D	To be used by A/C with MTOW < 62T. Exceptions applied by TWR in order to ensure fluency of the airport air traffic.
	APRON 2	Departure 1B (Stands 10, 11)	TWY G RWY backtrack	TWY G	NIL
		Departure 1C (Stands 13, 14, 15, 16, 17, 18)	TWY C TWY G RWY backtrack		
		Departure 1D	TWY E TWY G RWY backtrack		
Take-off RWY 25					
	Instruction given by ATC			Stop bar	Remarks
	Location	Name of the Standard Taxi Route	Taxiway to be followed		
Taxi via standard taxi route	APRON 1	Departure 2A	TWY A TWY D TWY F RWY backtrack	TWY D	To be used by A/C with MTOW < 62 T. Exceptions applied by TWR in order to ensure fluency of the airport air traffic.
	APRON 2	Departure 2B (Stands 10, 11)	TWY G	TWY G	NIL
		Departure 2C (Stands 13, 14, 15, 16, 17, 18)	TWY C TWY G		
		Departure 2D	TWY E TWY G		

- se suspendă temporar următoarele hărți: AD 2.7-20/08 OCT 2020, AD 2.7-21/08 OCT 2020.
- se adaugă temporar următoarele hărți: AD 2.7-20/17 JUN 2021, AD 2.7-21/17 JUN 2021.

Durata estimată a lucrărilor este de 5 luni.

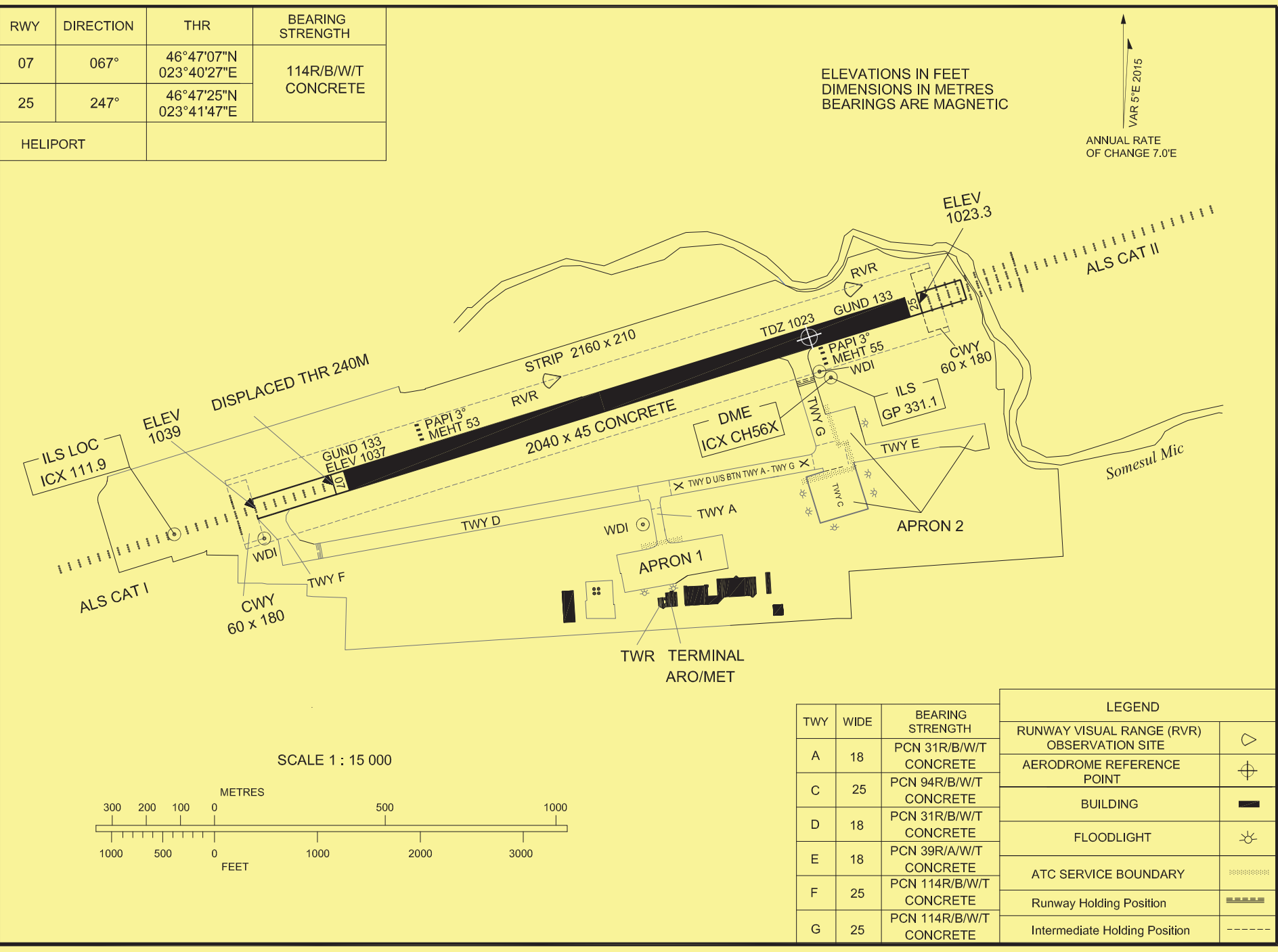
**- SFÂRȘIT -**

**AERODROME CHART - ICAO**

46° 47' 21" N  
023° 41' 32" E  
ELEV 1039FT

CLUJ TOWER 118.705  
CLUJ TOWER ALTN 134.400  
CLUJ ATIS 125.525

**CLUJ NAPOCA / Avram Iancu (LRCL)**



RWY	DIRECTION	THR	BEARING STRENGTH
07	067°	46°47'07"N 023°40'27"E	114R/B/W/T CONCRETE
25	247°	46°47'25"N 023°41'47"E	
HELIPORT			

			LEGEND	
TWY	WIDE	BEARING STRENGTH	RUNWAY VISUAL RANGE (RVR) OBSERVATION SITE	
A	18	PCN 31R/B/W/T CONCRETE	AERODROME REFERENCE POINT	
C	25	PCN 94R/B/W/T CONCRETE	BUILDING	
D	18	PCN 31R/B/W/T CONCRETE	FLOODLIGHT	
E	18	PCN 39R/A/W/T CONCRETE	ATC SERVICE BOUNDARY	
F	25	PCN 114R/B/W/T CONCRETE	Runway Holding Position	
G	25	PCN 114R/B/W/T CONCRETE	Intermediate Holding Position	

**AERODROME GROUND /  
MOVEMENT CHART - ICAO**

ARP ELEV 1039 FT

APRON 1 ELEV 1026 FT  
APRON 2 ELEV 1026 FT

CLUJ TOWER	118.705
CLUJ TOWER ALTN	134.400
CLUJ ATIS	125.525

**CLUJ NAPOCA  
Avram Iancu ( LRCL)**

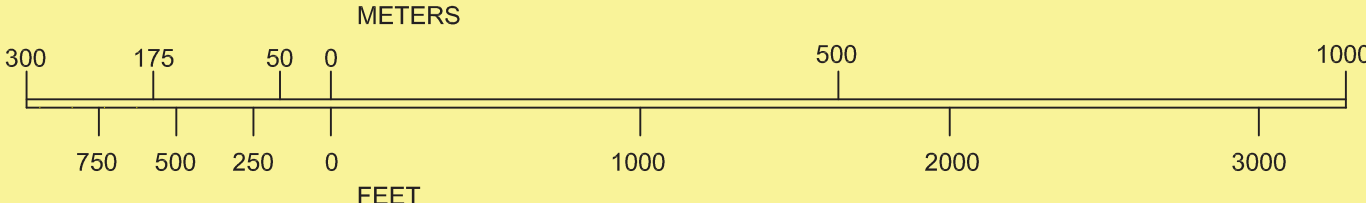
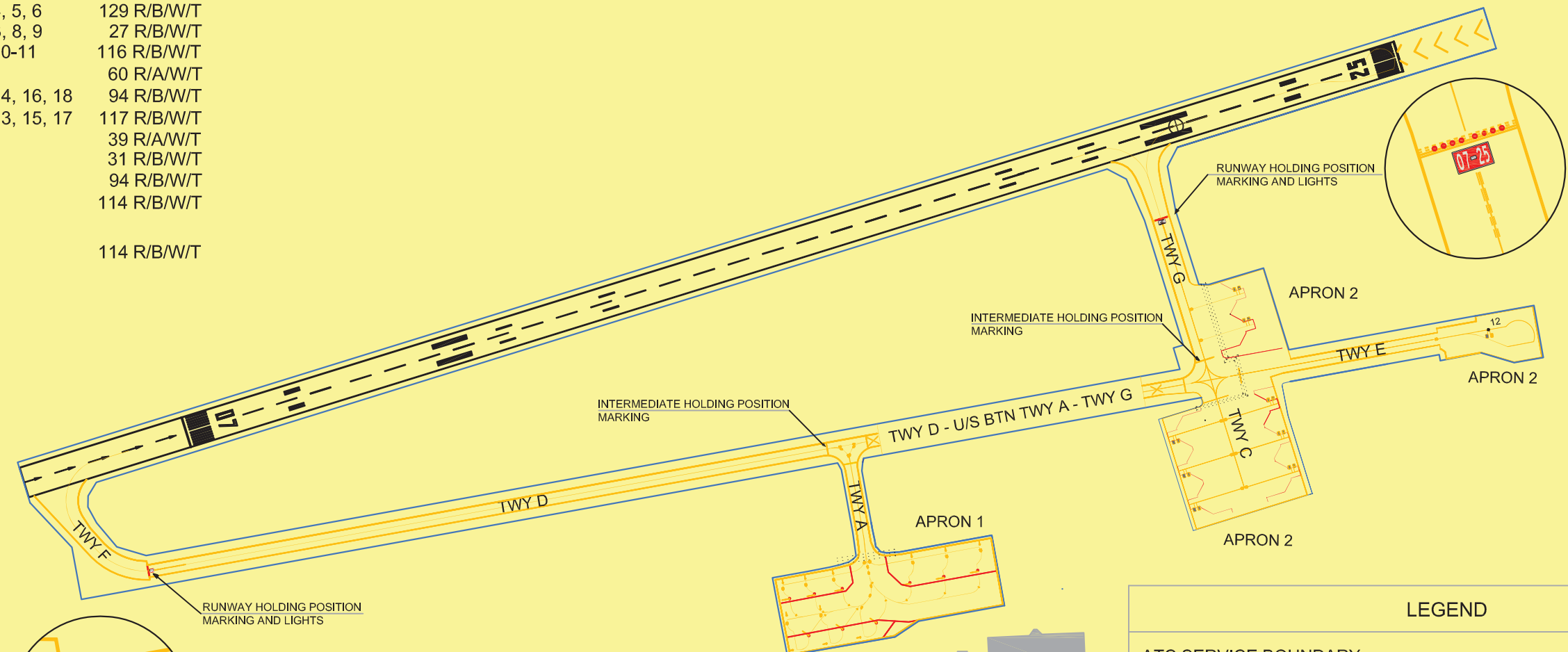
ELEVATIONS IN FEET  
DIMENSIONS IN METRES  
BEARINGS ARE MAGNETIC

TWY A, D, E 18 M WIDE  
TWY C, F, G 25 M WIDE

**BEARING STRENGTH**

APRON 1 STANDS 1, 2, 7	44 R/B/W/T
APRON 1 STANDS 4, 5, 6	129 R/B/W/T
APRON 1 STANDS 3, 8, 9	27 R/B/W/T
APRON 2 STANDS 10-11	116 R/B/W/T
APRON 2 STAND 12	60 R/A/W/T
APRON 2 STANDS 14, 16, 18	94 R/B/W/T
APRON 2 STANDS 13, 15, 17	117 R/B/W/T
TWY E	39 R/A/W/T
TWY A, D	31 R/B/W/T
TWY C	94 R/B/W/T
TWY F, G	114 R/B/W/T
RWY 07-25	114 R/B/W/T

VAR 5°E 2015  
ANNUAL RATE  
OF CHANGE 7.0'E



LEGEND	
ATC SERVICE BOUNDARY	⋯⋯⋯⋯⋯
AERODROME REFERENCE POINT	⊕
PAVED AREA EDGE	—
TAXIWAY / TAXILANE GUIDANCE LINES	—
RUNWAY HOLDING POSITION	⋯⋯⋯⋯⋯
INTERMEDIATE HOLDING POSITION	⋯⋯⋯⋯⋯
APRON SAFETY LINES	—
INTERMEDIATE HOLDING POSITION LIGHTS - STOP BAR	⋯⋯⋯⋯⋯
BUILDING	■