



romatsa

romanian air traffic services administration

Headquarters

10. Ion Ionescu de la Brad Blvd., PO Box 18-90

013813 Bucharest, Romania

phone: (+4021) 208 31 00

fax: (+4021) 230 24 42

AFTN: LRBBRTYD

e-mail: romatsa.office@romatsa.ro

www.romatsa.ro

AIM Unit

Phone: +40.21.232.56.99; Fax: +40.21.208.99.16; AFS: LRBBYOYX

Web: www.aisro.ro; E-mail: ais@aisro.ro; ais@romatsa.ro

AIRAC
AIP SUP

02
25 MAY 2017

AIRAC AIP SUPPLEMENT 02/17
WORK in progress at BACĂU/George Enescu airport
Phase II

Effective date 25th of MAY 2017 the second phase of repairs surface refurbishment works will be carried at BACĂU/George Enescu Airport. In this phase, RWY 16 THRESHOLD and RWY 34 END will be displaced with 500m to the south end. Accordingly to the shortening of the runway 16/34, the following modifications are to be operated:

- displaced RWY 16 THRESHOLD and RWY 34 END coordinates: 463142.30N 0265427.43E;
- PAPI 16 unserviceable;
- RWY 16 authorized conditions of operation: VFR;
- RWY 34 authorized conditions of operation: precision approach (ILS procedure);
- markings modified accordingly (see MARKING AIDS RWY 16/34 AND EXIT TWY);

- RWY physical characteristics:

LRBC AD 2.12 RUNWAY PHYSICAL CHARACTERISTICS

<i>Designations RWY NR</i>	<i>TRUE BRG</i>	<i>Dimensions of RWY (M)</i>	<i>Strength (PCN) and surface of RWY and SWY</i>	<i>THR coordinates RWY end coordinates THR geoid undulation</i>	<i>THR elevation and highest elevation of TDZ of precision APP RWY</i>
1	2	3	4	5	6
16	164.82°	2000 x 45	20/R/A/W/T Asphalt	463142.30N 0265427.43E 463039.79N 0265451.99E GUND 108 FT	THR 603 FT
34	344.83°	2000 x 45	20/R/A/W/T Asphalt	463039.97N 0265451.92E 463142.30N 0265427.43E GUND 109 FT	THR 591 FT
<i>Slope of RWY-SWY</i>	<i>SWY dimensions (M)</i>	<i>CWY dimensions (M)</i>	<i>Strip dimensions (M)</i>	<i>OFZ</i>	<i>Remarks</i>
7	8	9	10	11	12
0% (750 M)	Nil	400 x 200	2120 x 300	Nil	Nil
-0.5% (1250 M)					
0.5% (1250 M)	Nil	60 x 200	2120 x 300	Nil	Nil
0% (750 M)					

- declared distances:

LRBC AD 2.13 DECLARED DISTANCES

<i>RWY designator</i>	<i>TORA (M)</i>	<i>TODA (M)</i>	<i>ASDA (M)</i>	<i>LDA (M)</i>	<i>Remarks</i>
1	2	3	4	5	6
16	2000	2400	2000	2000	Nil
34	2000	2060	2000	2000	Nil

Lucrări de reparații la pista Aeroportului BACĂU/George Enescu Faza a-II-a

Începând cu data de 25 mai 2017 se va desfășura faza a-II-a a lucrărilor de reparații a suprafețelor de mișcare la Aeroportul BACĂU/George Enescu. În această etapă, pragul pistei pe direcția 16 și sfârșitul pistei pe direcția 34 se vor deplasa cu 500m spre sud. Corespunzător reducerii lungimii pistei de decolare/aterizare, se produc următoarele modificări:

- coordonatele noului prag al pistei pe direcția 16, identice cu coordonatele sfârșitului pistei pe direcția 34, sunt următoarele: 463142.30N 0265427.43E;
- PAPI 16, scos din funcțiune;
- condițiile de operare pe pista 16: VFR;
- condițiile de operare pe pista 34: apropiere instrumental de precizie (procedura ILS);
- se modifică marcajele de zi corespunzător scurtării pistei de decolare/aterizare (vezi harta MARKING AIDS RWY 16/34 AND EXIT TWY);
- caracteristicile fizice ale pistei:

LRBC AD 2.12 RUNWAY PHYSICAL CHARACTERISTICS

<i>Designations RWY NR</i>	<i>TRUE BRG</i>	<i>Dimensions of RWY (M)</i>	<i>Strength (PCN) and surface of RWY and SWY</i>	<i>THR coordinates RWY end coordinates THR geoid undulation</i>	<i>THR elevation and highest elevation of TDZ of precision APP RWY</i>
1	2	3	4	5	6
16	164.82°	2000 x 45	20/R/A/W/T Asphalt	463142.30N 0265427.43E 463039.79N 0265451.99E GUND 108 FT	THR 603 FT
34	344.83°	2000 x 45	20/R/A/W/T Asphalt	463039.97N 0265451.92E 463142.30N 0265427.43E GUND 109 FT	THR 591 FT
<i>Slope of RWY-SWY</i>	<i>SWY dimensions (M)</i>	<i>CWY dimensions (M)</i>	<i>Strip dimensions (M)</i>	<i>OFZ</i>	<i>Remarks</i>
7	8	9	10	11	12
0% (750 M) -0.5% (1250 M) 0.5% (1250 M) 0% (750 M)	Nil	400 x 200	2120 x 300	Nil	Nil
	Nil	60 x 200	2120 x 300	Nil	Nil

- distanțele declarate:

LRBC AD 2.13 DECLARED DISTANCES

<i>RWY designator</i>	<i>TORA (M)</i>	<i>TODA (M)</i>	<i>ASDA (M)</i>	<i>LDA (M)</i>	<i>Remarks</i>
1	2	3	4	5	6
16	2000	2400	2000	2000	Nil
34	2000	2060	2000	2000	Nil

- Approach and RWY lighting available as follows:

LRBC AD 2.14 APPROACH AND RWY LIGHTING

<i>RWY Designator</i>	<i>APCH LGT type LEN INTST</i>	<i>THR LGT colour WBAR</i>	<i>VASIS (MEHT) PAPI</i>	<i>TDZ, LGT LEN</i>	<i>RWY Centre Line LGT Length, spacing, colour, INTST</i>	<i>RWY edge LGT LEN, spacing, colour, INTST</i>	<i>RWY End LGT colour WBAR</i>	<i>SWY LGT LEN (M) colour</i>	<i>Remarks</i>
1	2	3	4	5	6	7	8	9	10
16	Nil	Green -	Nil	Nil	Nil	1400M, 58M, White, LIH 600M, 58M, Yellow, LIH	Red -	Nil	Nil
34	CAT I 900M LIH	Green -	PAPI Left/3°	Nil	Nil	1400M, 58M, White, LIH 600M, 58M, Yellow, LIH	Red -	Nil	Nil

- the following charts are suspended: AD 2.2-20/27 APR 2017, AD 2.2-20a/27 APR 2017, AD 2.2-25/27 APR 2017, AD 2.2-26/27 APR 2017, AD 2.2-37/26 MAY 2016, AD 2.2-93/26 MAY 2016, AD 2.2-93a/01 MAY 2014;
- the following charts are available: AD 2.2-20/25 MAY 2017, AD 2.2-20a/25 MAY 2017, AD 2.2-25/25 MAY 2017, AD 2.2-26/25 MAY 2017;
- before landing, aircraft will be informed by TWR on the displacement of RWY 16 THRESHOLD and RWY 34 END by 500m, during the work period of second phase, using the following terminology:

**"CAUTION, WORK IN PROGRESS.
DISPLACED RWY 16 THRESHOLD AND RWY 34 END WITH 500M."**

- the length of working area will be 410m;
- between operational runway (2000m) and working area (410m) will be a safety area of 90m, free of obstacles;
- estimated work period is about 1 month.

- END -

- luminile de apropiere și balizajul corespunzător scurtării pistei de decolare/aterizare sunt disponibile după cum urmează:

LRBC AD 2.14 APPROACH AND RWY LIGHTING

<i>RWY Designator</i>	<i>APCH LGT type LEN INTST</i>	<i>THR LGT colour WBAR</i>	<i>VASIS (MEHT) PAPI</i>	<i>TDZ, LGT LEN</i>	<i>RWY Centre Line LGT Length, spacing, colour, INTST</i>	<i>RWY edge LGT LEN, spacing, colour, INTST</i>	<i>RWY End LGT colour WBAR</i>	<i>SWY LGT LEN (M) colour</i>	<i>Remarks</i>
1	2	3	4	5	6	7	8	9	10
16	Nil	Green -	Nil	Nil	Nil	1400M, 58M, White, LIH 600M, 58M, Yellow, LIH	Red -	Nil	Nil
34	CAT I 900M LIH	Green -	PAPI Left/3°	Nil	Nil	1400M, 58M, White, LIH 600M, 58M, Yellow, LIH	Red -	Nil	Nil

- se suspendă următoarele hărți: AD 2.2-20/27 APR 2017, AD 2.2-20a/27 APR 2017, AD 2.2-25/27 APR 2017, AD 2.2-26/27 APR 2017, AD 2.2-37/26 MAY 2016, AD 2.2-93/26 MAY 2016, AD 2.2-93a/01 MAY 2014;
- se introduc următoarele hărți: AD 2.2-20/25 MAY 2017, AD 2.2-20a/25 MAY 2017, AD 2.2-25/25 MAY 2017, AD 2.2-26/25 MAY 2017;
- înainte de aterizare, aeronavele vor fi informate prin TWR despre deplasarea pragului pistei pe direcția 16 și a sfârșitului pistei pe direcția 34 cu 500m, pe întreaga perioadă a lucrărilor din faza II, utilizând următoarea frazeologie:

**"CAUTION, WORK IN PROGRESS.
DISPLACED RWY 16 THRESHOLD AND RWY 34 END WITH 500M."**

- zona de lucru are o lungime de 410m;
- între pista operațională (2000m) și zona de lucru (410m) va exista o zona de siguranță de 90m, liberă de obstacole;
- durata estimată a lucrărilor este de 1 lună.

- SFÂRȘIT -

AERODROME CHART - ICAO

46° 31' 19" N
026° 54' 37" E

ELEV 607FT

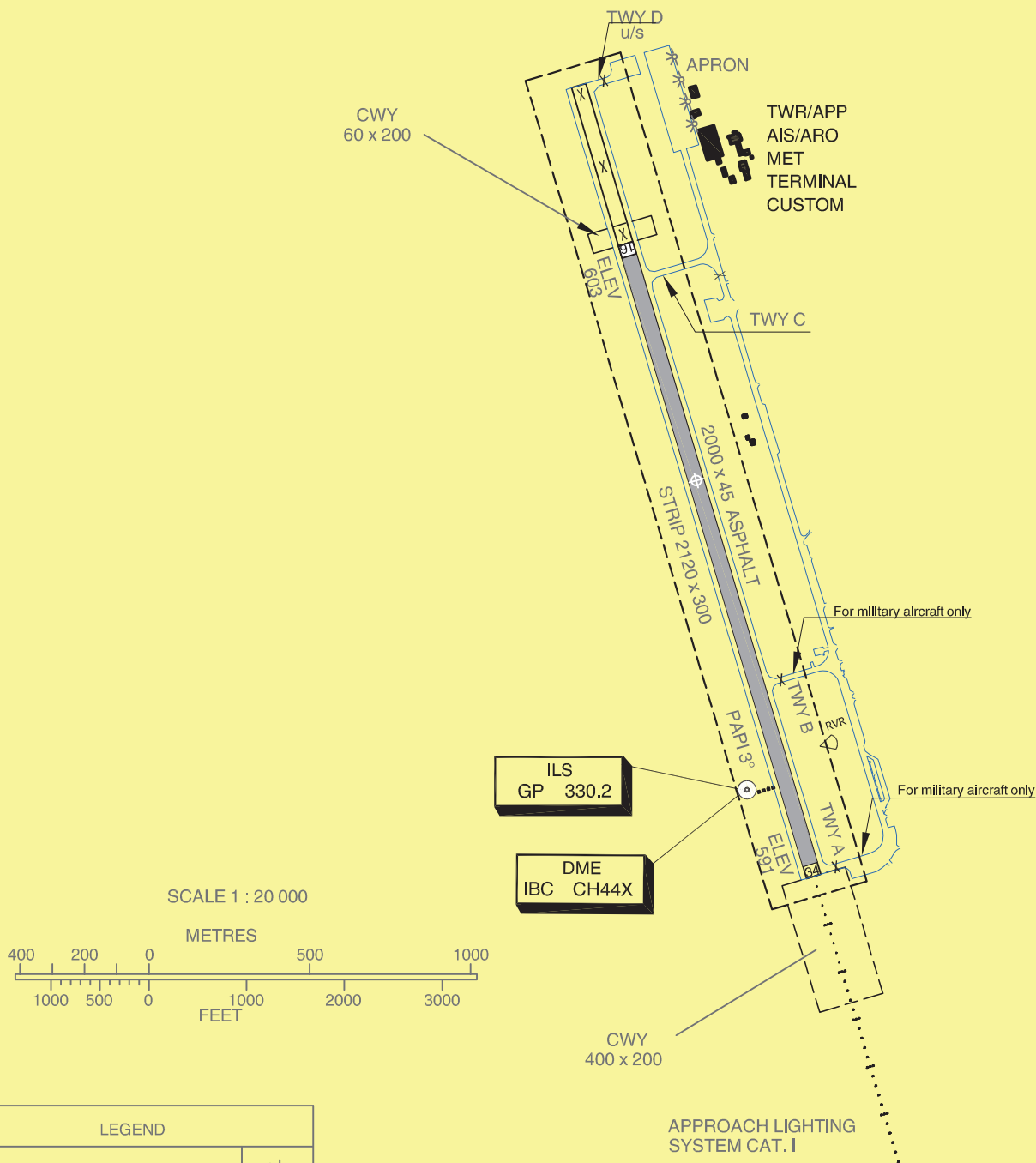
TWR 118.6

**BACĂU / George Enescu
(LRBC)**

RWY	DIRECTION	THR	BEARING STRENGTH
16	160°	46°31'42"N 026°54'27"E	20/R/A/W/T ASPHALT
34	340°	46°30'40"N 026°54'52"E	
HELIPORT			

**ELEVATIONS IN FEET
DIMENSIONS IN METRES
BEARINGS ARE MAGNETIC**

Changes: Temporary chart.



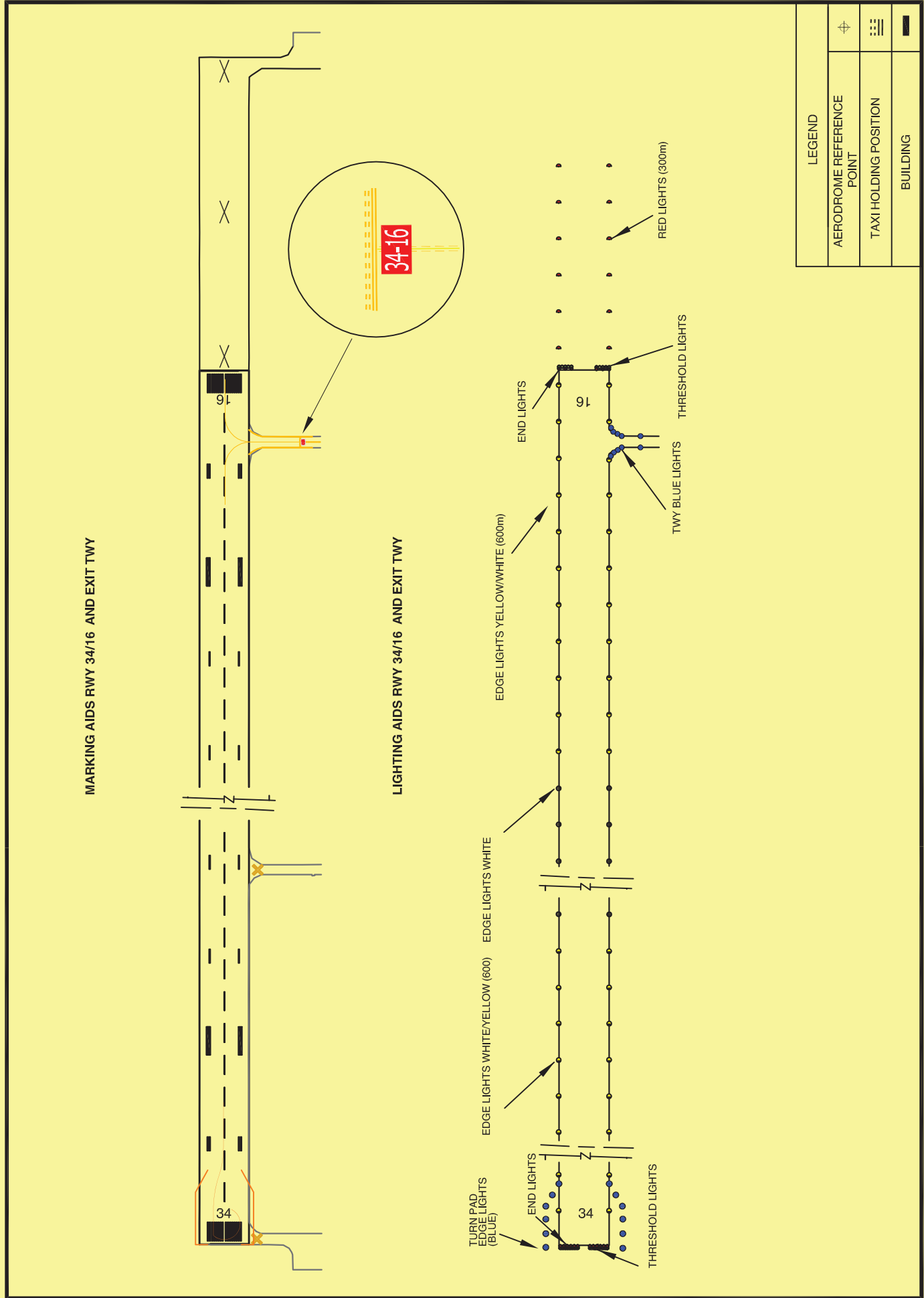
AERODROME CHART - ICAO

46° 31' 19" N
026° 54' 37" E

ELEV 607FT

TWR 118.6

BACĂU / Bacău
(LRBC)



Changes: TEMPORARY CHART

AERODROME OBSTACLE CHART - ICAO
TYPE A (OPERATING LIMITATIONS)

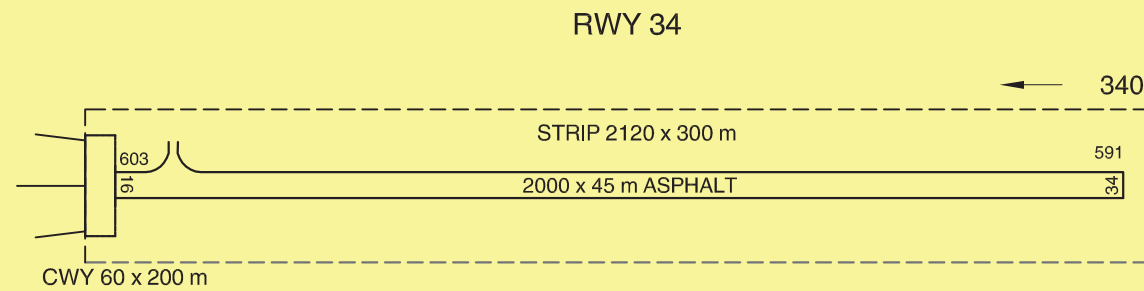
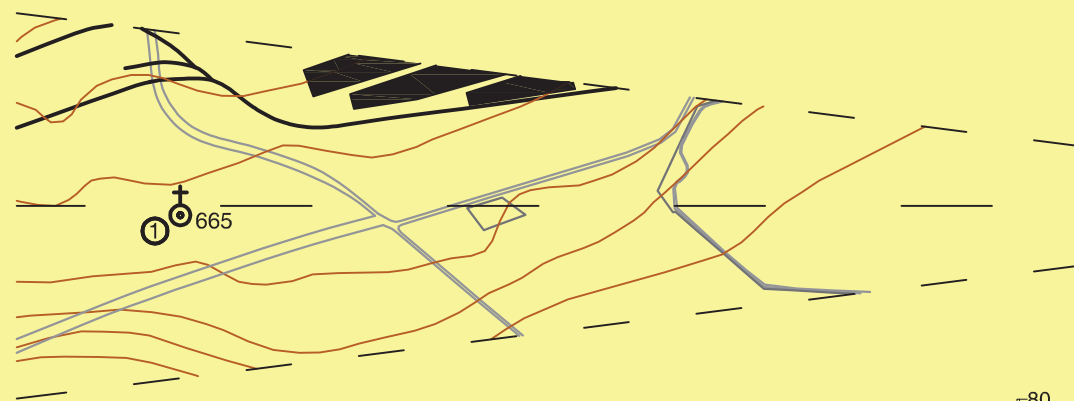
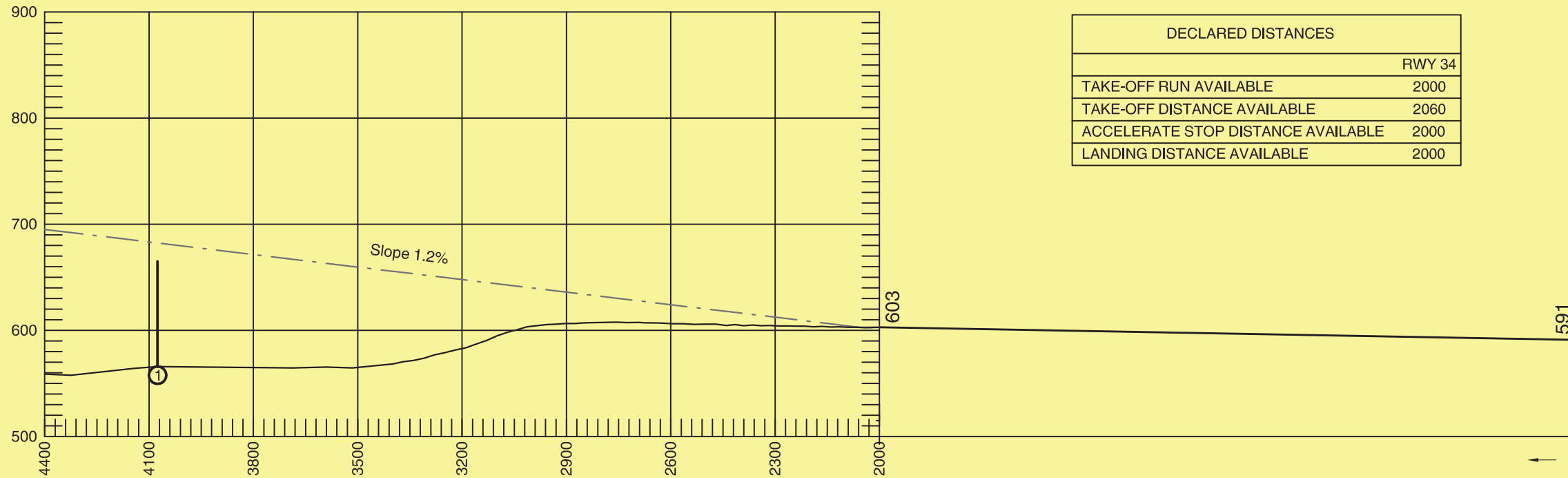
BACĂU / Bacău (LRBC)

ELEVATIONS IN FEET AND DIMENSIONS IN METRES

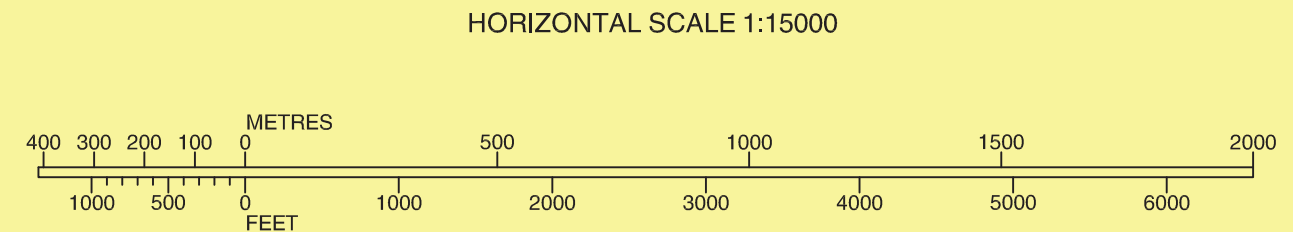
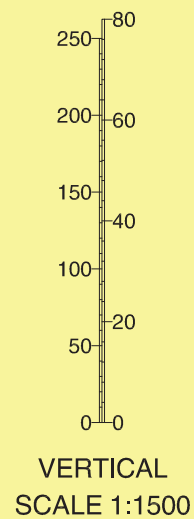
MAGNETIC VARIATION 5° E - 2010

RWY 34

DECLARED DISTANCES	
	RWY 34
TAKE-OFF RUN AVAILABLE	2000
TAKE-OFF DISTANCE AVAILABLE	2060
ACCELERATE STOP DISTANCE AVAILABLE	2000
LANDING DISTANCE AVAILABLE	2000



LEGEND	
IDENTIFICATION NUMBER	①
POLE, TOWER, SPIRE, ANTENNA, etc.	⊙
BUILDING OR LARGE STRUCTURE	■
FENCE	— — — — —
ROAD	==
RAILROAD	—+—+—+—+—
CHURCH	⊕



AERODROME OBSTACLE CHART - ICAO
TYPE A (OPERATING LIMITATIONS)

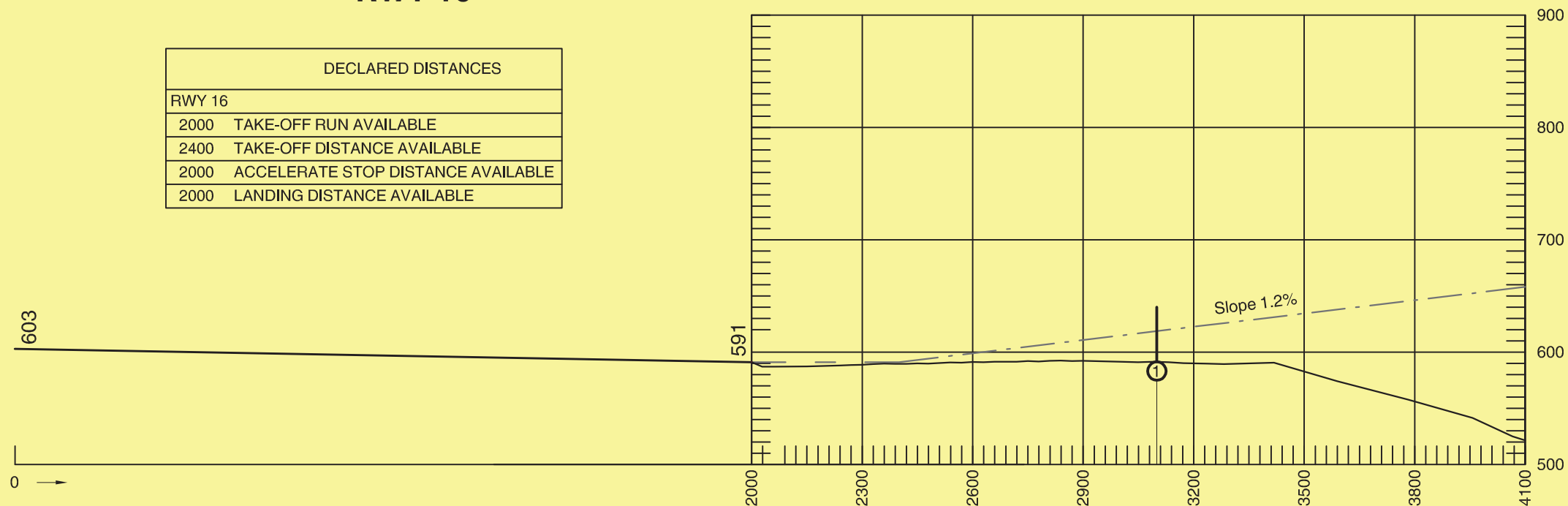
BACĂU / Bacău (LRBC)

ELEVATIONS IN FEET AND DIMENSIONS IN METRES

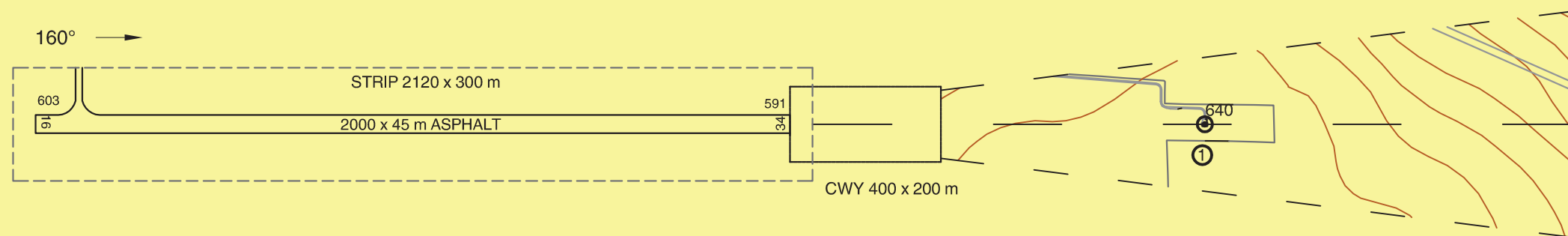
MAGNETIC VARIATION 5° E - 2010

RWY 16

DECLARED DISTANCES	
RWY 16	
2000	TAKE-OFF RUN AVAILABLE
2400	TAKE-OFF DISTANCE AVAILABLE
2000	ACCELERATE STOP DISTANCE AVAILABLE
2000	LANDING DISTANCE AVAILABLE



RWY 16



LEGEND	
IDENTIFICATION NUMBER	①
POLE, TOWER, SPIRE, ANTENNA, etc.	⊙
BUILDING OR LARGE STRUCTURE	■
FENCE	— — — — —
ROAD	==
RAILROAD	—+—+—+—+—
CHURCH	⊕

