

**AIRAC AIP SUPPLEMENT 01/16**

**WORK in progress at BACĂU/George Enescu airport  
Phase I**

Effective date 13<sup>th</sup> of OCT 2016 the first phase of repairs surface refurbishment works will be carried at BACĂU/George Enescu Airport. In this phase, RWY 16 THRESHOLD and RWY 34 END will be displaced with 500m to the south end. Accordingly to the shortening of the runway 01/19, the following modifications are to be operated:

- displaced RWY 16 THRESHOLD and RWY 34 END coordinates: 463142.30N 0265427.43E;
- PAPI 16 unserviceable;
- RWY 16 authorized conditions of operation: VFR;
- RWY 34 authorized conditions of operation: ILS, NDB;
- markings modified accordingly (see chart AD 2.2-20a/13 OCT 2016);
- RWY physical characteristics:

**LRBC AD 2.12 RUNWAY PHYSICAL CHARACTERISTICS**

<i>Designations RWY NR</i>	<i>TRUE BRG</i>	<i>Dimensions of RWY (M)</i>	<i>Strength (PCN) and surface of RWY and SWY</i>	<i>THR coordinates RWY end coordinates THR geoid undulation</i>	<i>THR elevation and highest elevation of TDZ of precision APP RWY</i>
1	2	3	4	5	6
16	164.82°	2000 x 80	20/R/C/W/T Concrete	463142.30N 0265427.43E 463039.79N 0265451.99E GUND 108 FT	THR 603 FT
34	344.83°	2000 x 80	20/R/C/W/T Concrete	463039.97N 0265451.92E 463142.30N 0265427.43E GUND 109 FT	THR 591 FT
<i>Slope of RWY-SWY</i>	<i>SWY dimensions (M)</i>	<i>CWY dimensions (M)</i>	<i>Strip dimensions (M)</i>	<i>OFZ</i>	<i>Remarks</i>
7	8	9	10	11	12
0% (750 M)	Nil	400 x 200	2120 x 200	Nil	Nil
-0.5% (1250 M)					
0.5% (1250 M)	Nil	60 x 200	2120 x 200	Nil	Nil
0% (750 M)					

- declared distances:

**LRBC AD 2.13 DECLARED DISTANCES**

<i>RWY designator</i>	<i>TORA (M)</i>	<i>TODA (M)</i>	<i>ASDA (M)</i>	<i>LDA (M)</i>	<i>Remarks</i>
1	2	3	4	5	6
16	2000	2400	2000	2000	Nil
34	2000	2060	2000	2000	Nil

### Lucrări de reparații la pista Aeroportului BACĂU/George Enescu Faza a I-a

Începând cu data de 13 octombrie 2016 se va desfășura faza I a lucrărilor de reparații a suprafețelor de mișcare la Aeroportul BACĂU/George Enescu. În această etapă, pragul pistei pe direcția 16 și sfârșitul pistei pe direcția 34 se vor deplasa cu 500m spre sud. Corespunzător reducerii lungimii pistei de decolare/aterizare, se produc următoarele modificări:

- coordonatele noului prag al pistei pe direcția 16, identice cu coordonatele sfârșitului pistei pe direcția 34, sunt următoarele: 463142.30N 0265427.43E;
- PAPI 16, scos din funcțiune;
- condițiile de operare pe pista 16: VFR;
- condițiile de operare pe pista 34: ILS, NDB;
- se modifică marcajele de zi corespunzător scurtării pistei de decolare/aterizare (vezi harta AD 2.2-20a/13 OCT 2016);

- caracteristicile fizice ale pistei:

#### LRBC AD 2.12 RUNWAY PHYSICAL CHARACTERISTICS

Designations RWY NR	TRUE BRG	Dimensions of RWY (M)	Strength (PCN) and surface of RWY and SWY	THR coordinates RWY end coordinates THR geoid undulation	THR elevation and highest elevation of TDZ of precision APP RWY
1	2	3	4	5	6
16	164.82°	2000 x 80	20/R/C/W/T Concrete	463142.30N 0265427.43E 463039.79N 0265451.99E	THR 603 FT GUND 108 FT
34	344.83°	2000 x 80	20/R/C/W/T Concrete	463039.97N 0265451.92E 463142.30N 0265427.43E GUND 109 FT	THR 591 FT
Slope of RWY-SWY	SWY dimensions (M)	CWY dimensions (M)	Strip dimensions (M)	OFZ	Remarks
7	8	9	10	11	12
0% (750 M)	Nil	400 x 200	2120 x 200	Nil	Nil
-0.5% (1250 M)					
0.5% (1250 M)	Nil	60 x 200	2120 x 200	Nil	Nil
0% (750 M)					

- distanțele declarate ale pistei:

#### LRBC AD 2.13 DECLARED DISTANCES

RWY designator	TORA (M)	TODA (M)	ASDA (M)	LDA (M)	Remarks
1	2	3	4	5	6
16	2000	2400	2000	2000	Nil
34	2000	2060	2000	2000	Nil

- approach and RWY lighting available as follows:

**LRBC AD 2.14 APPROACH AND RWY LIGHTING**

<i>RWY Designator</i>	<i>APCH LGT type LEN INTST</i>	<i>THR LGT colour WBAR</i>	<i>VASIS (MEHT) PAPI</i>	<i>TDZ, LGT, LEN</i>	<i>RWY Centre Line LGT Length, spacing, colour, INTST</i>	<i>RWY edge LGT LEN, spacing, colour, INTST</i>	<i>RWY End LGT colour WBAR</i>	<i>SWY LGT LEN(M) colour</i>	<i>Remarks</i>
1	2	3	4	5	6	7	8	9	10
16	Nil	Green -	Nil	Nil	Nil	1370M, 60M, white, LIH 630M, 60M, yellow, LIH	Red -	Nil	Nil
34	Cat. I 900 M LIH	Green -	PAPI Left/3°	Nil	Nil	1390M, 60M, white, LIH 610M, 60M, yellow, LIH	Red -	Nil	Nil

- the following charts are suspended: AD 2.2-20/23 JUN 2016, AD 2.2-20a/23 JUN 2016, AD 2.2-25/02 MAY 2013, AD 2.2-93/26 MAY 2016; AD 2.2-93a/01 MAY 2014;
- the following charts are available: AD 2.2-20/13 OCT 2016, AD 2.2-20a/13 OCT 2016, AD 2.2-25/13 OCT 2016;
- before landing, aircraft will be informed by TWR on the displacement of RWY 16 THRESHOLD and RWY 34 END by 500m, during the work period on first phase, using the following terminology:

**"CAUTION, WORK IN PROGRESS.  
DISPLACED RWY 16 THRESHOLD AND RWY 34 END WITH 500M."**

- the length of working area will be 410m;
- between operational runway (2000m) and working area (410m) will be a safety area of 90m, free of obstacles;
- estimated work period is about 1 month.

**- END -**

- luminile de apropiere și balizajul corespunzător scurtării pistei de decolare/aterizare sunt disponibile după cum urmează:

**LRBC AD 2.14 APPROACH AND RWY LIGHTING**

RWY Designator	APCH LGT type LEN INTST	THR LGT colour WBAR	VASIS (MEHT) PAPI	TDZ, LGT, LEN	RWY Centre Line LGT Length,spacing, colour, INTST	RWY edge LGT LEN, spacing, colour, INTST	RWY End LGT colour WBAR	SWY LGT LEN(M) colour	Remarks
1	2	3	4	5	6	7	8	9	10
16	Nil	Green -	Nil	Nil	Nil	1370M, 60M, white,LIH 630M, 60M, yellow, LIH	Red -	Nil	Nil
34	Cat. I 900 M LIH	Green -	PAPI Left/3°	Nil	Nil	1390M, 60M, white,LIH 610M, 60M, yellow, LIH	Red -	Nil	Nil

- se suspendă următoarele hărți: AD 2.2-20/23 JUN 2016, AD 2.2-20a/23 JUN 2016, AD 2.2-25/02 MAY 2013, AD 2.2-93/26 MAY 2016; AD 2.2-93a/01 MAY 2014;
- se introduc următoarele hărți: AD 2.2-20/13 OCT 2016, AD 2.2-20a/13 OCT 2016, AD 2.2-25/13 OCT 2016;
- înainte de aterizare, aeronavele vor fi informate prin TWR despre deplasarea pragului pistei pe direcția 16 și a sfârșitului pistei pe direcția 34 cu 500m, pe întreaga perioadă a lucrărilor din faza I, utilizând următoarea frazeologie:

**"CAUTION, WORK IN PROGRESS.  
DISPLACED RWY 16 THRESHOLD AND RWY 34 END WITH 500M."**

- zona de lucru are o lungime de 410m;
- între pista operațională (2000m) și zona de lucru (410m) va exista o zona de siguranță de 90m, liberă de obstacole;
- durata estimată a lucrărilor este de 1 lună.

**- SFÂRȘIT -**

AERODROME CHART - ICAO

46° 31' 19" N  
026° 54' 37" E

ELEV 607FT

TWR 118.6

BACĂU / Bacău  
(LRBC)

RWY	DIRECTION	THR	BEARING STRENGTH
16	160°	46°31'42"N 026°54'27"E	20/R/C/W/T CONCRETE
34	340°	46°30'40"N 026°54'52"E	
HELIPORT			

ELEVATIONS IN FEET  
DIMENSIONS IN METRES  
BEARINGS ARE MAGNETIC  
VAR 5°E 2010

WORKS IN PROGRESS

ILS/LOC  
IBC 110.7

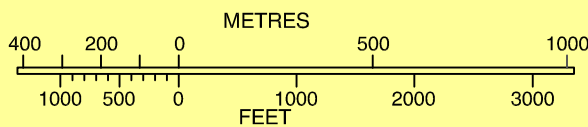
CWY  
60 X 200

APP/TWR  
AIS/ARO  
MET  
TERMINAL  
CUSTOM

PAPI-34 (3°)  
ILS  
GP 330.2  
DME  
IBC CH44X

CWY  
400 X 200

SCALE 1 : 20 000



LEGEND	
FLOODLIGHT	
TAXI HOLDING POSITION	
AERODROME REFERENCE POINT	
BUILDING	
ATC SERVICE BOUNDARY	

Changes: Temporary chart

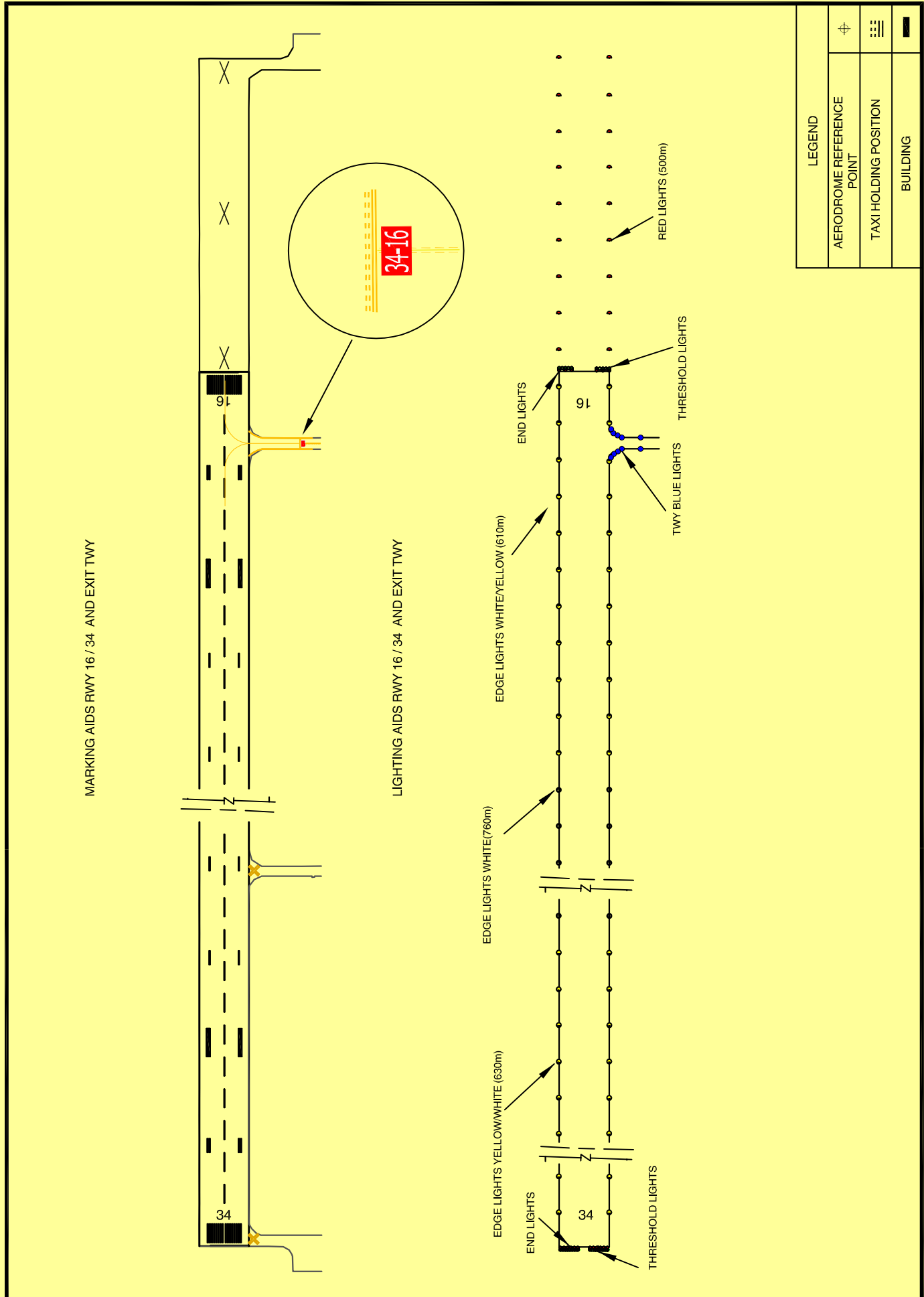
AERODROME CHART - ICAO

46° 31' 19" N  
026° 54' 37" E

ELEV 607FT

TWR 118.6

BACĂU / Bacău  
(LRBC)



MARKING AIDS RWY 16 / 34 AND EXIT TWY

LIGHTING AIDS RWY 16 / 34 AND EXIT TWY

EDGE LIGHTS WHITE/YELLOW (610m)

EDGE LIGHTS WHITE (760m)

EDGE LIGHTS YELLOW/WHITE (630m)

END LIGHTS

THRESHOLD LIGHTS

TWY BLUE LIGHTS

THRESHOLD LIGHTS

RED LIGHTS (600m)

LEGEND	
	AERODROME REFERENCE POINT
	TAXI HOLDING POSITION
	BUILDING

Changes: TEMPORARY CHART

**AERODROME OBSTACLE CHART - ICAO**  
TYPE A (OPERATING LIMITATIONS)

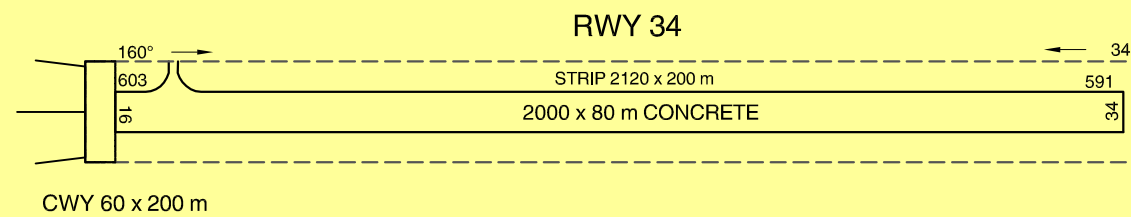
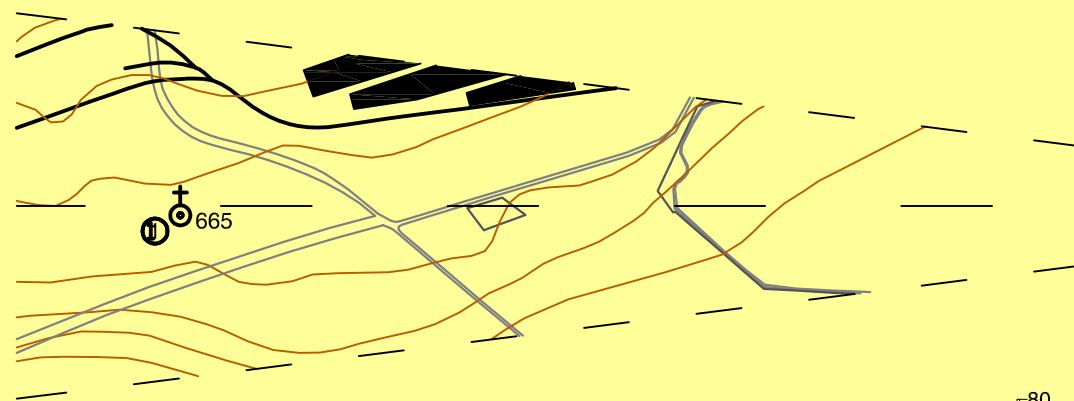
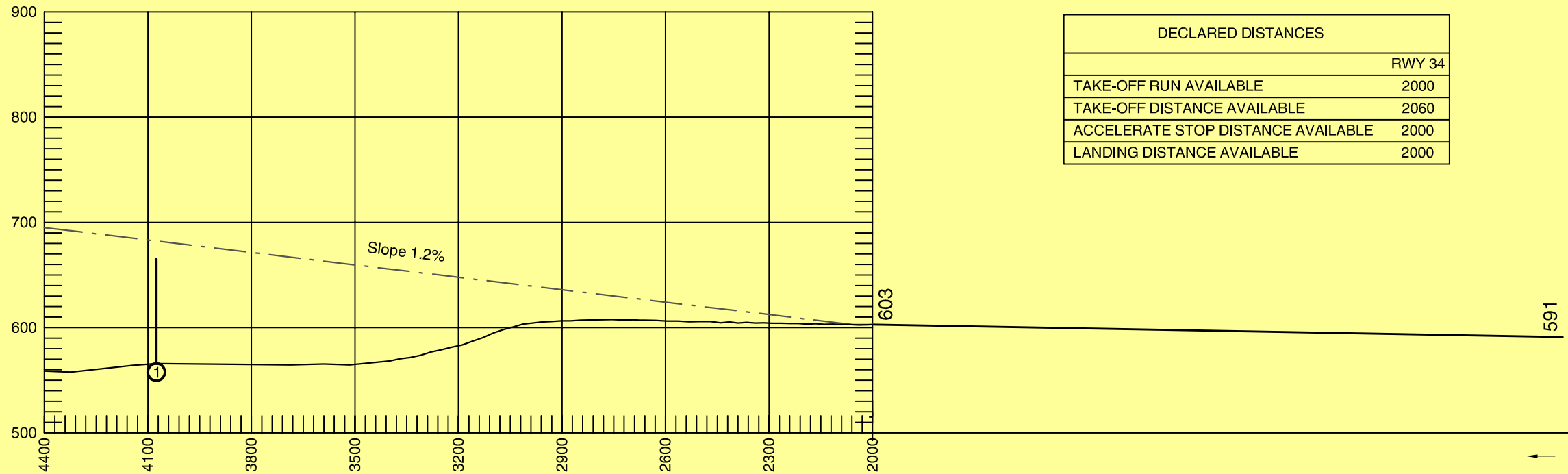
ELEVATIONS IN FEET AND DIMENSIONS IN METRES

**BACĂU / Bacău (LRBC)**

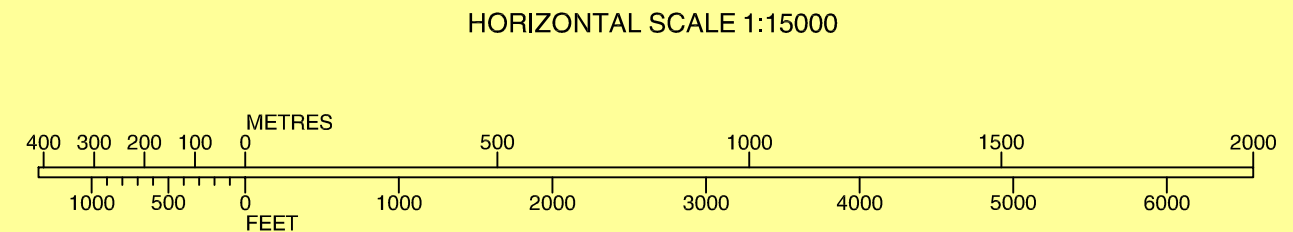
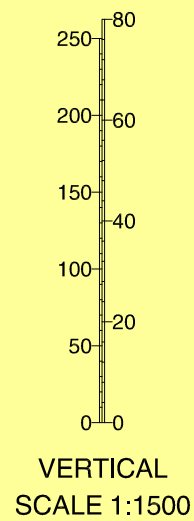
MAGNETIC VARIATION 5° E - 2010

**RWY 34**

DECLARED DISTANCES	
	RWY 34
TAKE-OFF RUN AVAILABLE	2000
TAKE-OFF DISTANCE AVAILABLE	2060
ACCELERATE STOP DISTANCE AVAILABLE	2000
LANDING DISTANCE AVAILABLE	2000



LEGEND	
IDENTIFICATION NUMBER	①
POLE, TOWER, SPIRE, ANTENNA, etc.	⊙
BUILDING OR LARGE STRUCTURE	■
FENCE	— — — — —
ROAD	==
RAILROAD	—+—+—+—+—
CHURCH	⊕



**AERODROME OBSTACLE CHART - ICAO**  
TYPE A (OPERATING LIMITATIONS)

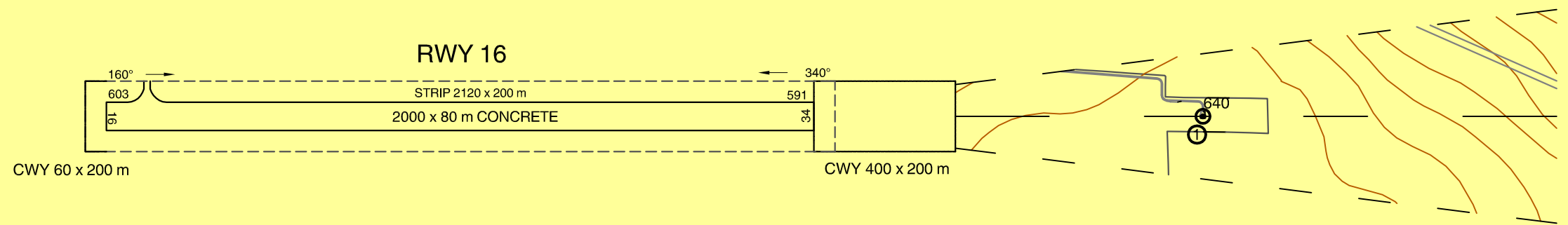
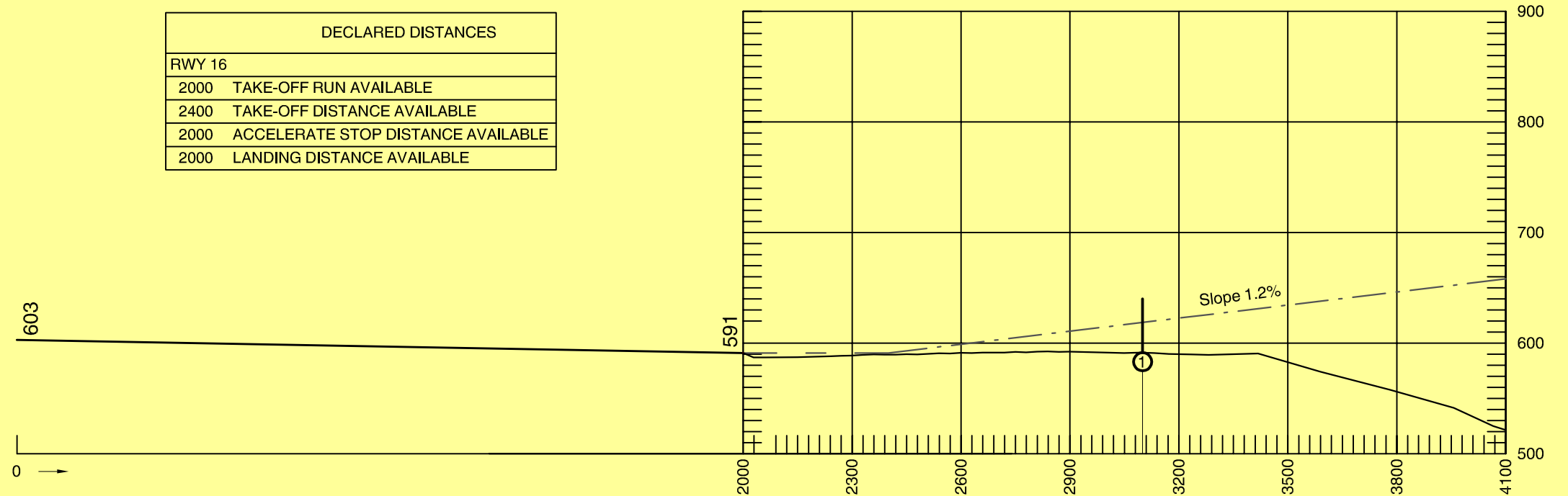
ELEVATIONS IN FEET AND DIMENSIONS IN METRES

**BACĂU / Bacău (LRBC)**

MAGNETIC VARIATION 5° E - 2010

**RWY 16**

DECLARED DISTANCES	
RWY 16	
2000	TAKE-OFF RUN AVAILABLE
2400	TAKE-OFF DISTANCE AVAILABLE
2000	ACCELERATE STOP DISTANCE AVAILABLE
2000	LANDING DISTANCE AVAILABLE



LEGEND	
IDENTIFICATION NUMBER	①
POLE, TOWER, SPIRE, ANTENNA, etc.	⊙
BUILDING OR LARGE STRUCTURE	■
FENCE	— — — — —
ROAD	==
RAILROAD	—+—+—+—+—
CHURCH	⊕

