

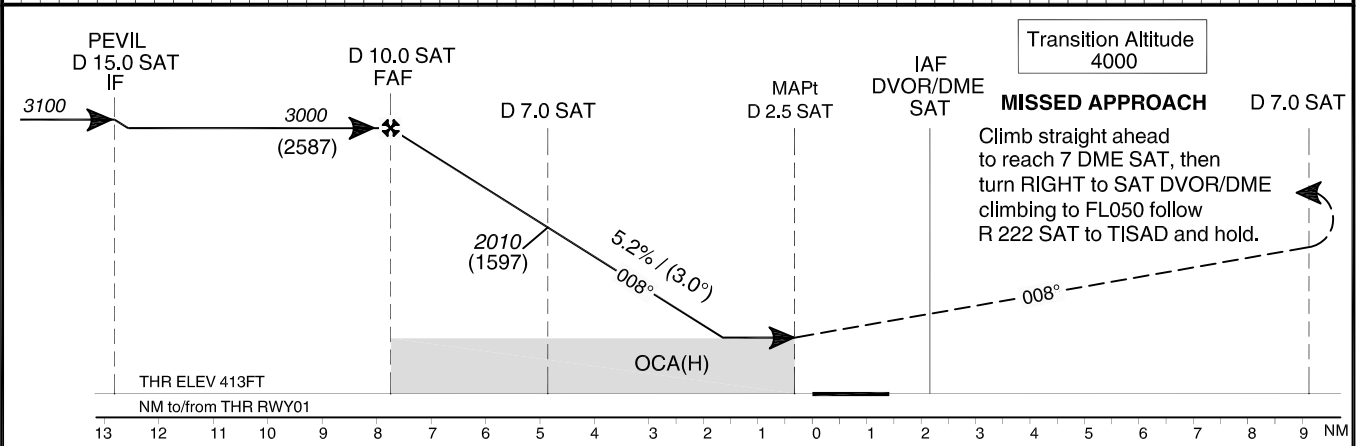
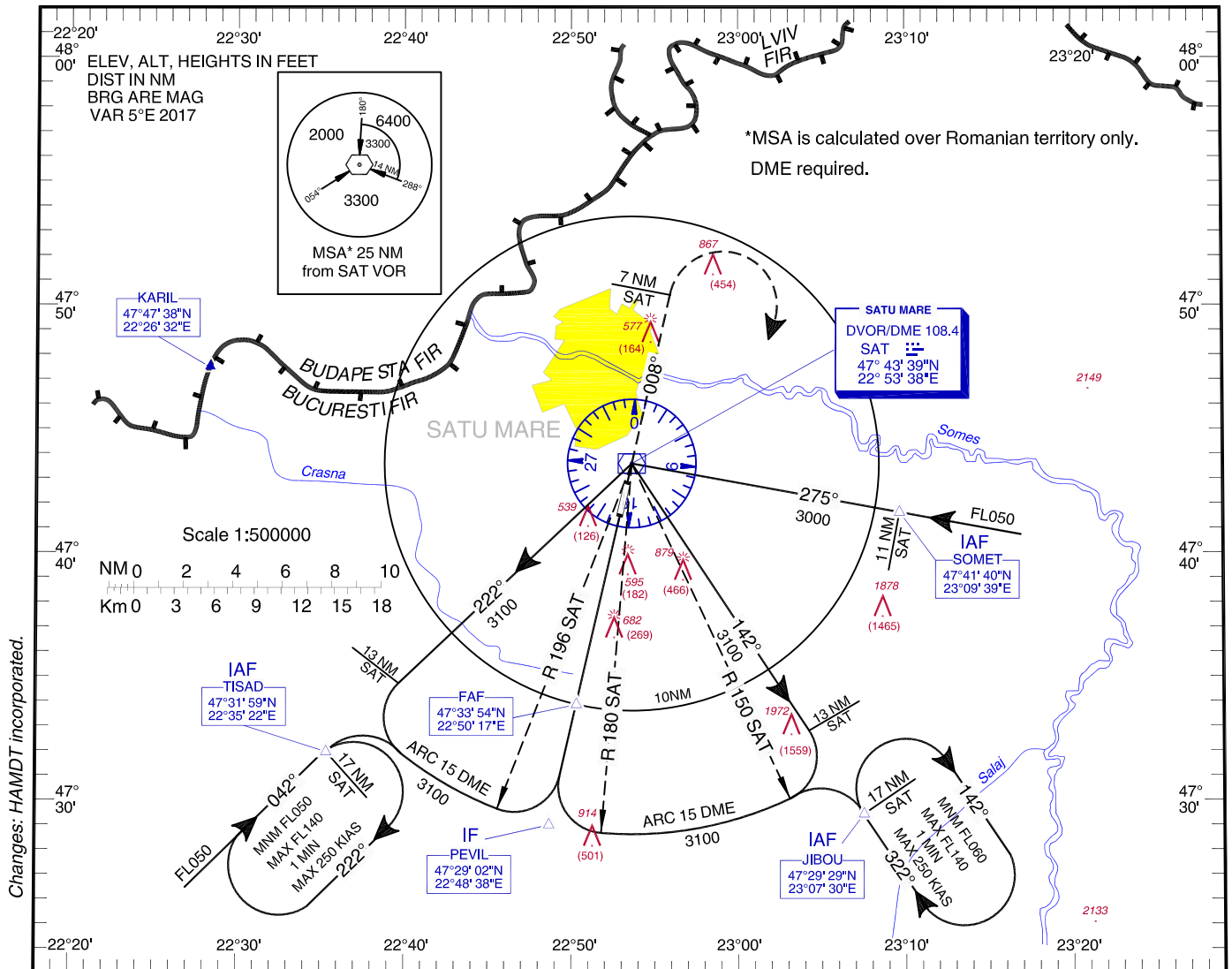
**INSTRUMENT APPROACH
CHART - ICAO**

AERODROME ELEV. 413 FT
HEIGHTS RELATED TO AD ELEV.

SATU MARE / Satu Mare (LRSM)

Satu Mare Tower 119.655
Satu Mare Tower ALTN 118.800

**VOR
RWY 01**



OCA/H	A	B	C	D
Straight-in Approach	930 (517)			
Circling	930		1280	

GS	fts	70	90	100	120	140	160
FAF-MAPt 7.5 NM	min:s	6:26	5:00	4:30	3:45	3:13	2:49
Rate of descent	ft/min	372	478	531	637	743	849

Timing not authorized for defining the MAPt.

Dist to SAT DME	NM	9	8	7	6	5	4
Altitude (Height)	FT	2643 (2230)	2325 (1912)	2006 (1593)	1688 (1275)	1369 (956)	1051 (638)

For data tabulation see verso



SATU MARE / Satu Mare (LRSM)
VOR RWY 01

AERONAUTICAL DATA TABULATION

VOR Approach to RWY 01 from TISAD, JIBOU, SOMET	
Fix/Point	Coordinates
TISAD (IAF) – R 221.75° / 17.00 NM SAT	47°31'58.7"N 022°35'21.6"E
JIBOU (IAF) – R 141.41° / 17.00 NM SAT	47°29'28.6"N 023°07'30.0"E
SOMET (IAF) – R 095.27° / 11.00 NM SAT	47°41'40.0"N 023°09'39.3"E
SAT VOR/DME	47°43'38.7"N 022°53'37.9"E
PEVIL (IF) – R188.08° / 15.00 NM SAT	47°29'02.4"N 022°48'37.6"E
FAF – R188.08° / 10.00 NM SAT	47°33'54.4"N 022°50'17.3"E
MAPT - R 188.08° / 2.50 NM SAT	47°41'12.6"N 022°52'47.6"E
THR RWY 01	47°41'32.87"N 022°52'54.64"E

Final approach descent angle: 3.00°