

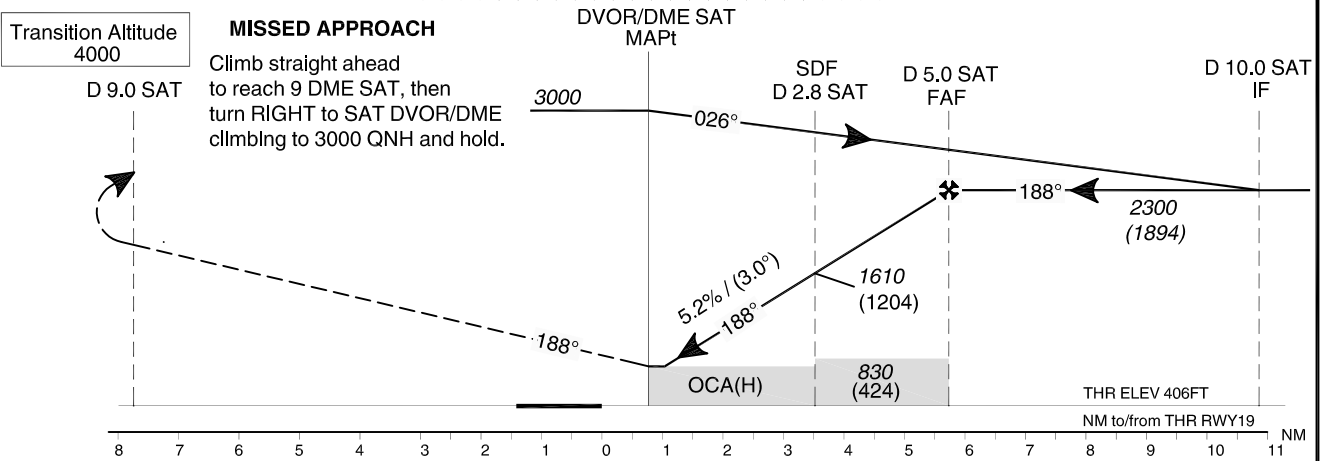
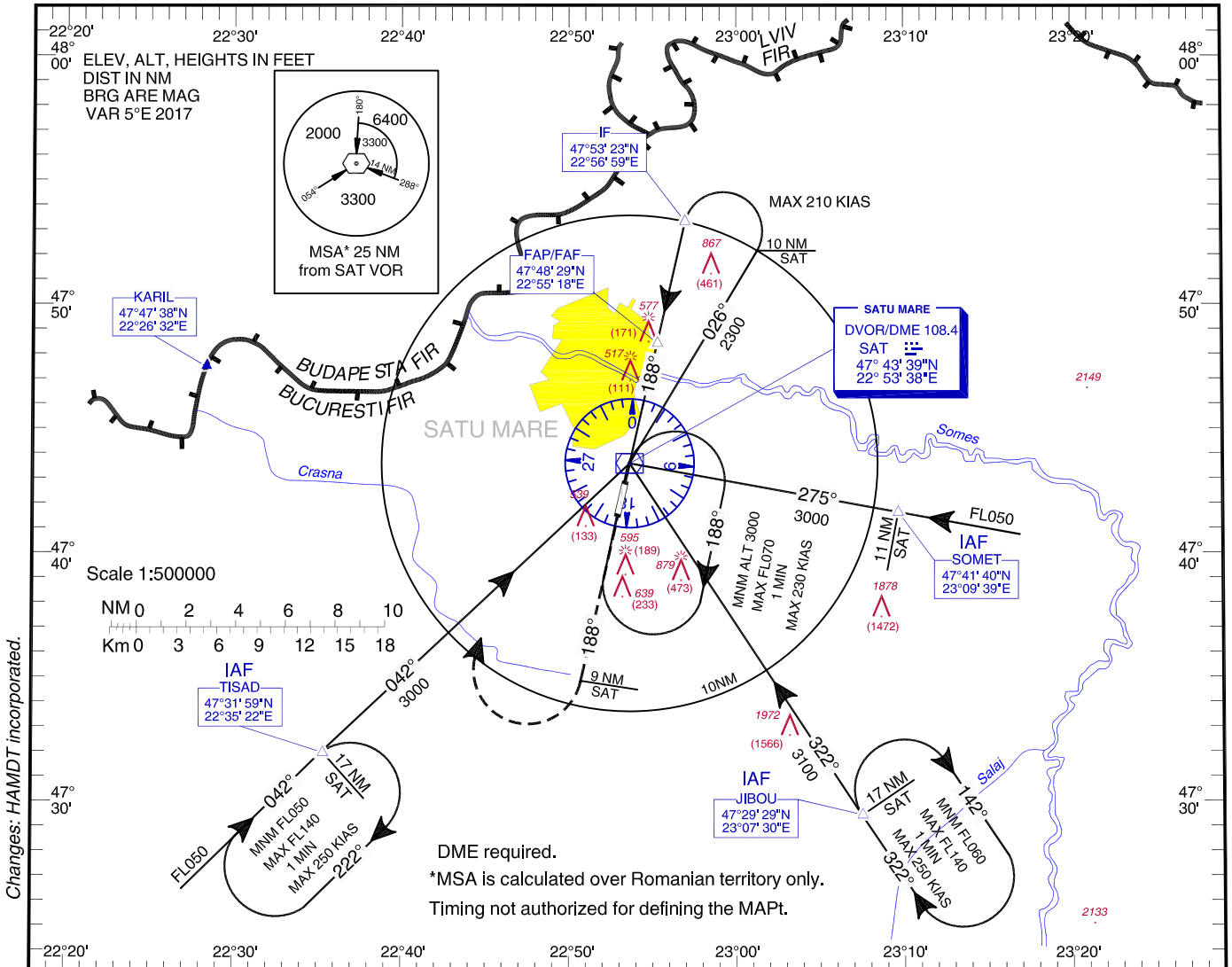
**INSTRUMENT APPROACH
CHART - ICAO**

AERODROME ELEV. 413 FT
HEIGHTS RELATED TO THR19 - ELEV. 406FT

SATU MARE / Satu Mare (LRSM)

Satu Mare Tower 119.655
Satu Mare Tower ALTN 118.800

**VOR
RWY 19
CAT C, D**



OCA/H		C	D
Straight-in Approach	Stepdown fix (D 2.8 SAT)	770 (364)	
	w/o stepdown fix	830 (424)	
Circling		1280	

GS	kts	70	90	100	120	140	160
FAF-MAPt 4.97 NM	min:s	4:16	3:19	2:59	2:29	2:08	1:52
Rate of descent	ft/min	372	478	531	637	743	849

Dist to SAT DME	NM	1	2	2.8	3
Altitude (Height)	ft	1031 (625)	1349 (943)	1604 (1198)	1667 (1261)

For data tabulation see verso

SATU MARE / Satu Mare (LRSM)
VOR RWY 19, CAT C, D

AERONAUTICAL DATA TABULATION

VOR Approach to RWY 19, CAT C, D from TISAD, JIBOU, SOMET	
Fix/Point	Coordinates
TISAD (IAF) – R 221.75° / 17.00 NM SAT	47°31'58.7"N 022°35'21.6"E
JIBOU (IAF) – R 141.41° / 17.00 NM SAT	47°29'28.6"N 023°07'30.0"E
SOMET (IAF) – R 095.27° / 11.00 NM SAT	47°41'40.0"N 023°09'39.3"E
SAT VOR/DME (MAPT)	47°43'38.7"N 022°53'37.9"E
10.0D SAT (IF) - R 008.06° / 10.00 NM SAT	47°53'22.8"N 022°56'59.5"E
5.0D SAT (FAF) – 5.00 NM SAT	47°48'29.2"N 022°55'17.9"E
2.8D SAT (Stepdown Fix)	47°46'22.3"N 022°54'34.2"E
THR RWY 19	47°42'51.72"N 022°53'21.73"E

Final approach descent angle: 3.00°