

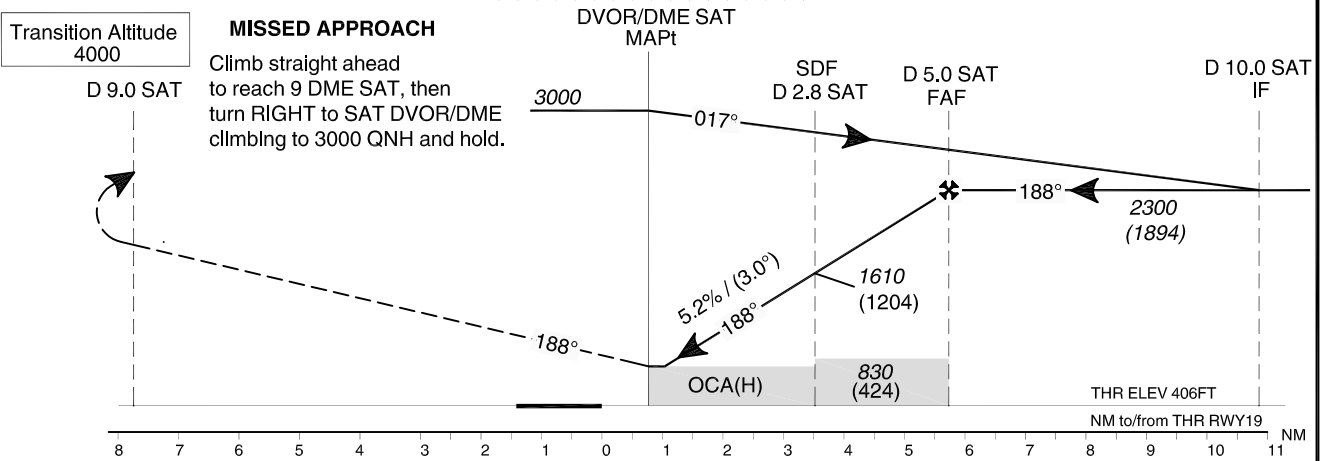
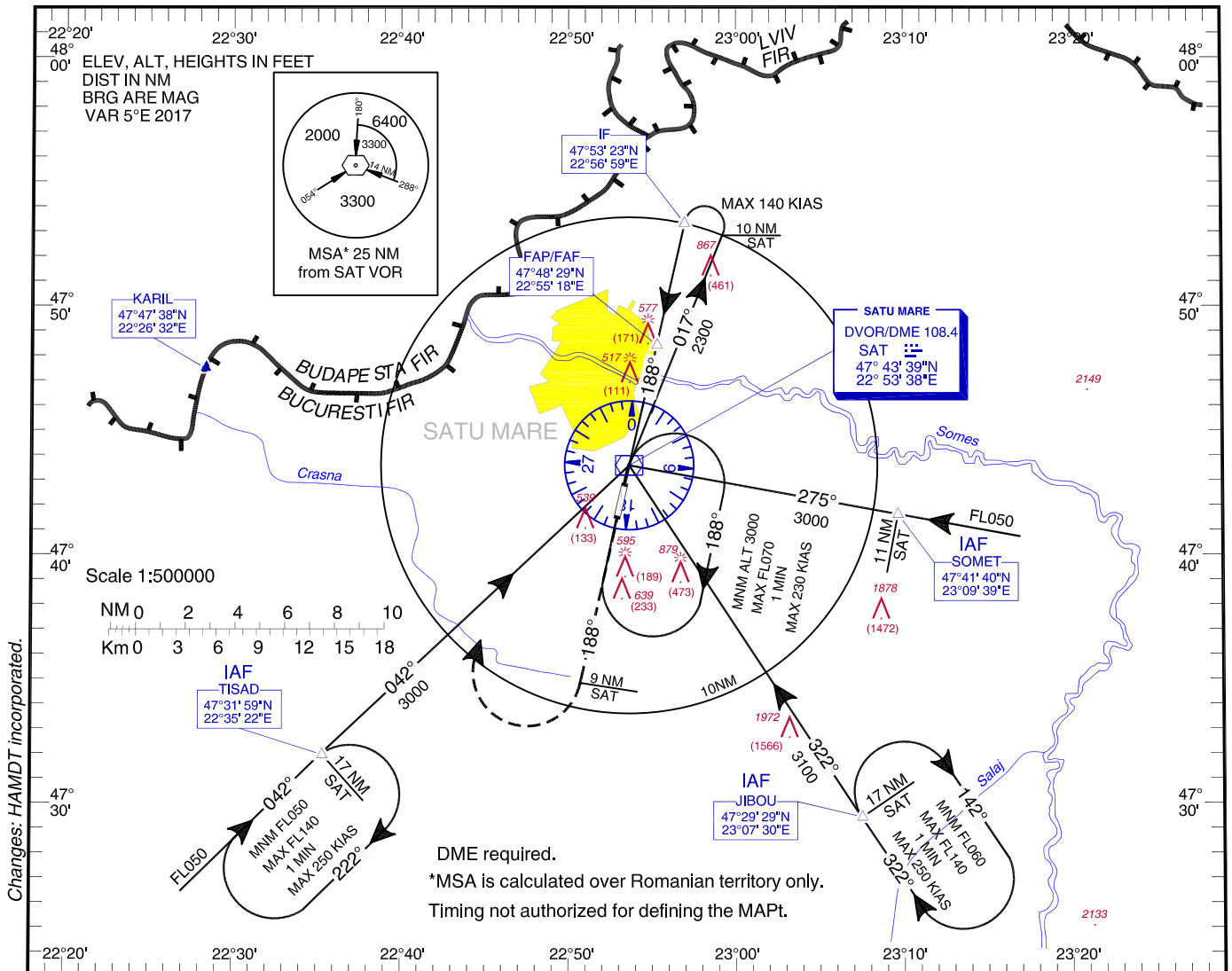
INSTRUMENT APPROACH
CHART - ICAO

AERODROME ELEV. 413 FT
HEIGHTS RELATED TO THR19 - ELEV. 406FT

SATU MARE / Satu Mare (LRSM)

Satu Mare Tower 119.655
Satu Mare Tower ALTN 118.800

VOR
RWY 19
CAT A, B



| OCA/H | | A | B |
|----------------------|--------------------------|-----------|---|
| Straight-in Approach | Stepdown fix (D 2.8 SAT) | 770 (364) | |
| | w/o stepdown fix | 830 (424) | |
| Circling | | 930 | |

| GS | fts | 70 | 90 | 100 | 120 | 140 | 160 |
|------------------|--------|------|------|------|------|------|------|
| FAF-MAPt 4.97 NM | min:s | 4:16 | 3:19 | 2:59 | 2:29 | 2:08 | 1:52 |
| Rate of descent | ft/min | 372 | 478 | 531 | 637 | 743 | 849 |

| Dist to SAT DME | NM | 1 | 2 | 2.8 | 3 |
|-------------------|----|------------|------------|-------------|-------------|
| Altitude (Height) | ft | 1031 (625) | 1349 (943) | 1604 (1198) | 1667 (1261) |

For data tabulation see verso

SATU MARE / Satu Mare (LRSM)
VOR RWY 19, CAT A, B

AERONAUTICAL DATA TABULATION

| VOR Approach to RWY 19, CAT A, B from TISAD, JIBOU, SOMET | |
|--|------------------------------|
| Fix/Point | Coordinates |
| TISAD (IAF) – R 221.75° / 17.00 NM SAT | 47°31'58.7"N 022°35'21.6"E |
| JIBOU (IAF) – R 141.41° / 17.00 NM SAT | 47°29'28.6"N 023°07'30.0"E |
| SOMET (IAF) – R 095.27° / 11.00 NM SAT | 47°41'40.0"N 023°09'39.3"E |
| SAT VOR/DME (MAPT) | 47°43'38.7"N 022°53'37.9"E |
| 10.0D SAT (IF) - R 008.06° / 10.00 NM SAT | 47°53'22.8"N 022°56'59.5"E |
| 5.0D SAT (FAF) – 5.00 NM SAT | 47°48'29.2"N 022°55'17.9"E |
| 2.8D SAT (Stepdown Fix) | 47°46'22.3"N 022°54'34.2"E |
| THR RWY 19 | 47°42'51.72"N 022°53'21.73"E |

Final approach descent angle: 3.00°