

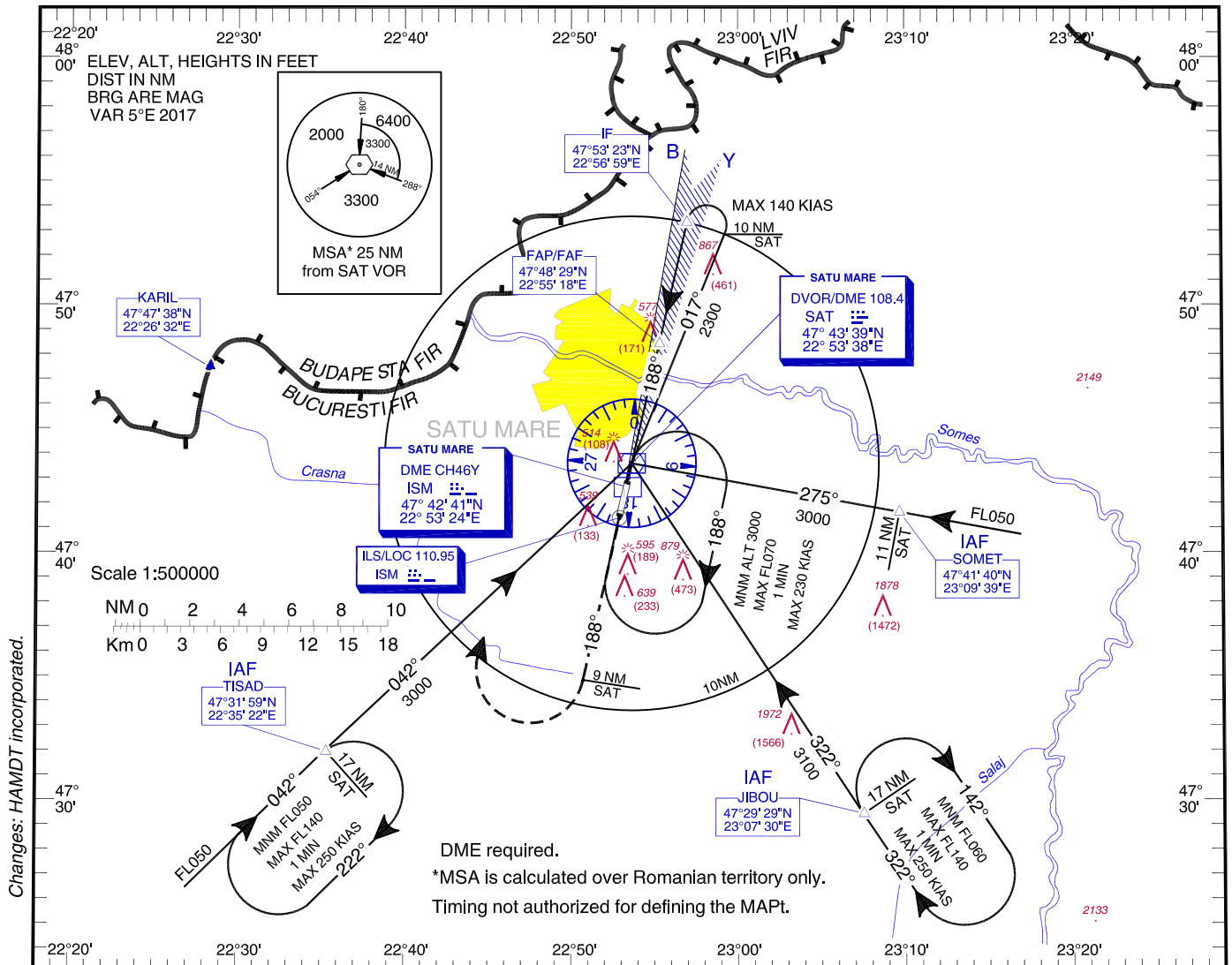
**INSTRUMENT APPROACH**  
**CHART - ICAO**

**AERODROME ELEV. 413 FT**  
HEIGHTS RELATED TO THR19 - ELEV. 406FT

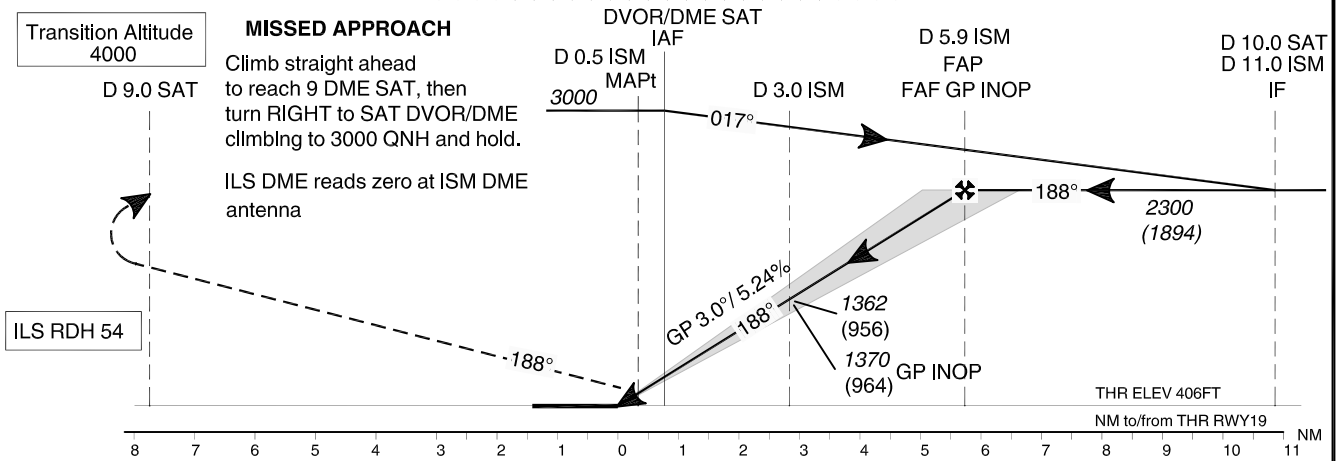
**SATU MARE / Satu Mare (LRSM)**

Satu Mare Tower 119.655  
Satu Mare Tower ALTN 118.800

**ILS**  
**RWY 19**  
**CAT A, B**



Changes: HAMDT incorporated.



OCA/H		A	B
Straight-in Approach	Cat I	586 (180)	596 (190)
	Cat II	497 (91)	514 (108)
	GP INOP	830 (424)	
	GP INOP Stepdown Fix (D 3.0 ISM)	770 (364)	
Circling		930	

GS	kts	70	90	100	120
FAF-MAPt 5.45 NM	min:s	4:40	3:38	3:16	2:44
Rate of descent	ft/min	372	478	531	637

Dist to ISM DME	NM	1	2	3	4
Altitude (Height)	FT	726 (320)	1044 (638)	1363 (957)	1681 (1275)

For data tabulation see verso



**SATU MARE / Satu Mare (LRSM)**  
**ILS RWY 19, CAT A, B**

**AERONAUTICAL DATA TABULATION**

<b>ILS Approach to RWY 19, CAT A,B from TISAD, JIBOU, SOMET</b>	
<b>Fix/Point</b>	<b>Coordinates</b>
<b>TISAD (IAF) – R 221.75° / 17.00 NM SAT</b>	47°31'58.7"N 022°35'21.6"E
<b>JIBOU (IAF) – R 141.41° / 17.00 NM SAT</b>	47°29'28.6"N 023°07'30.0"E
<b>SOMET(IAF) – R 095.27° / 11.00 NM SAT</b>	47°41'40.0"N 023°09'39.3"E
<b>SAT VOR/DME</b>	47°43'38.7"N 022°53'37.9"E
<b>IF - R 008.06° / 10.00 NM SAT</b>	47°53'22.8"N 022°56'59.5"E
<b>5.9D ISM (FAP/FAF) – 5.93 NM ISM</b>	47°48'29.2"N 022°55'17.9"E
<b>3.0D ISM (SDF)</b>	47°45'37.1"N 022°54'18.6"E
<b>0.5D ISM (MAPT)</b>	47°43'10.9"N 022°53'28.3"E
<b>THR RWY 19</b>	47°42'51.72"N 022°53'21.73"E
<b>LOC</b>	47°41'23.7"N 022°52'51.5"E